



TEST REPORT

Applicant : Orbbec Inc.
Product Name : Femto Bolt
Model Name : F00364-152
Brand Name : ORBBEC
Test Request : With reference to RoHS Directive 2015/863/EU amending 2011/65/EU
Receipt Date : 2023-08-29
Test Date : 2023-08-29 to 2023-09-11
Issue Date : 2023-09-13
Conclusion : Based on the performed tests on submitted sample(s), the results of Lead, Mercury, Cadmium, Hexavalent chromium, Polybrominated biphenyls (PBBs), Polybrominated diphenyl ethers (PBDEs) and Phthalates such as Bis (2-ethylhexyl) phthalate (DEHP), Dibutyl phthalate (DBP), Butyl benzyl Phthalate (BBP), Diisobutyl phthalate (DIBP) comply with the limits as set by RoHS Directive (EU) 2015/863 amending Annex II to Directive 2011/65/EU.



Edited by

Tao Qing

Tao Qing (Rapporteur)

Approved by

Kenny Li

Kenny Li (Supervisor)

NOTE: This document is issued by Shenzhen Morlab Communications Technology Co., Ltd., the Verification report shall not be reproduced except in full without prior written permission of the company. The test results apply only to the particular sample(s) tested and to the specific tests carried out which is available on request for validation and information confirmed at our website.





DIRECTORY

1. Applicant Information 3

2. Test Methods 3

3. Test Results And Sample Description 5

Annex A Photo of Sample53

Annex B Photo of Test Part55

Annex C General Information68

Change History		
Version	Date	Reason for Change
1.0	2023-09-13	First edition



1. Applicant Information

Applicant	:	Orbbec Inc.
Applicant Address	:	12/F, Hi-Tech Zone Union Headquarters Building, No.63 Xuefu Road, Nanshan District, Shenzhen, Guangdong P. R. China
Manufacturer	:	Orbbec Inc.
Manufacturer Address	:	12/F, Hi-Tech Zone Union Headquarters Building, No.63 Xuefu Road, Nanshan District, Shenzhen, Guangdong P. R. China

2. Test Methods

- (1) There are the results on total Br while test items on restricted substances are PBBs and PBDEs. There are the results on total Cr while test items on restricted substances Cr(VI).
- (2) Results are obtained by EDXRF for primary screening, and further chemical testing by ICP-OES (for Cd, Pb, Hg), UV-Vis (for Cr(VI)) and GC-MS (for PBBs, PBDEs) is recommended to be performed, if the concentration exceeds the below warning value according to IEC62321-3-1:2013 (unit: mg/kg).

Element	Polymers	Metals	Composite Materials
Cd	$P \leq 70 - 3\sigma < D < 130 + 3\sigma \leq F$	$P \leq 70 - 3\sigma < D < 130 + 3\sigma \leq F$	$P \leq 50 - 3\sigma < D < 150 + 3\sigma \leq F$
Pb	$P \leq 700 - 3\sigma < D < 1300 + 3\sigma \leq F$	$P \leq 700 - 3\sigma < D < 1300 + 3\sigma \leq F$	$P \leq 500 - 3\sigma < D < 1500 + 3\sigma \leq F$
Hg	$P \leq 700 - 3\sigma < D < 1300 + 3\sigma \leq F$	$P \leq 700 - 3\sigma < D < 1300 + 3\sigma \leq F$	$P \leq 500 - 3\sigma < D < 1500 + 3\sigma \leq F$
Br	$P \leq 300 - 3\sigma < D$	---	$P \leq 250 - 3\sigma < D$
Cr	$P \leq 700 - 3\sigma < D$	$P \leq 700 - 3\sigma < D$	$P \leq 500 - 3\sigma < D$

- (a) P = Below Limit, F = Over Limit, D = Inconclusive, LOD = Limit of Detection, "----" = Not regulated.
- (b) The XRF screening test for RoHS elements - the reading may be different to actual content in the sample be of non-uniformity composition.



(3) Chemical Test

Unit and MDL in wet chemical test.

Test Item	Procedure	Apparatus	MDL
Hg	IEC 62321-4:2013+AMD1:2017	ICP-OES	10 mg/kg
Cd & Pb	IEC 62321-5:2013	AAS or ICP-OES	10 mg/kg
Cr ⁶⁺	IEC 62321-7-2:2017(For Polymer and Electronics)	UV-VIS	10 mg/kg
	IEC 62321-7-1:2015 [▲] (For Plating on Metals)		0.10 ug/cm ²
PBBs	IEC 62321-6:2015	GC-MS	100 mg/kg
PBDEs	IEC 62321-6:2015	GC-MS	100 mg/kg
DEHP	IEC 62321-8:2017	GC-MS	100 mg/kg
BBP	IEC 62321-8:2017	GC-MS	100 mg/kg
DBP	IEC 62321-8:2017	GC-MS	100 mg/kg
DIBP	IEC 62321-8:2017	GC-MS	100 mg/kg

(c) The MDL for single compound of PBBs and PBDEs is 100 mg/kg.

(d) MDL of Cr(VI) for polymer and composite sample is 10 mg/kg.

(e) MDL of Cr(VI) for metal sample is 0.10 ug/cm².

(f) mg/kg = ppm, N.D. = Not Detected (< MDL), “---” = Not Conducted.

(g)[▲]= a. The sample is negative for Cr⁶⁺ - the Cr⁶⁺ concentration is below the limit 0.10 ug/cm². The coating is considered a non-Cr⁶⁺ based coating.

b. The sample is positive for Cr⁶⁺ - the Cr⁶⁺ concentration is greater than 0.13 ug/cm². The sample coating is considered to contain Cr⁶⁺.

c. The result between 0.10 ug/cm² and 0.13 ug/cm² is considered to be inconclusive unavoidable coating variations may influence the determination.

(h) When the test result is a critical value, we will use the measurement uncertainty give the judgment result based on the 95% Confidence intervals .

(4) The maximum permissible limit is quoted from the document (EU) 2015/863 amending ROHS Directive 2011/65/EU Annex II:

RoHS Restricted Substances	Maximum Concentration Value (mg/kg) (by weight in homogenous materials)
Lead (Pb)	1000
Cadmium (Cd)	100
Mercury (Hg)	1000
Hexavalent chromium (Cr(VI))	1000
Polybrominated biphenyls (PBBs)	1000
Polybrominated diphenyl ethers (PBDEs)	1000
Bis (2-ethylhexyl) phthalate (DEHP)	1000
Dibutyl phthalate (DBP)	1000
Benzyl butyl phthalate (BBP)	1000
Diisobutyl phthalate (DIBP)	1000



3. Test Results and Sample Description

The results of XRF screening and chemical test (Unit: mg/kg)

Part No.	Description	Material	X-ray Screening		Results of Chemical Test	Conclusion on RoHS EU	Sample Resubmitted
			Element	Data			
A-1	Bright Silvery Metal Screw	Metal	Pb	P	---	Comply	/
			Cd	P			
			Hg	P			
			Cr	P			
			Br	---			
			Cr ⁶⁺	---			
			PBBs	---			
			PBDEs	---			
			DBP	---			
			BBP	---			
			DEHP	---			
			DIBP	---			
A-2	Silvery Metal Screw With Spacers	Metal	Pb	P	Negative	Comply	/
			Cd	P			
			Hg	P			
			Cr	D			
			Br	---			
			Cr ⁶⁺	---			
			PBBs	---			
			PBDEs	---			
			DBP	---			
			BBP	---			
			DEHP	---			
			DIBP	---			
A-3	Silvery Metal Screw	Metal	Pb	P	---	Comply	/
			Cd	P			
			Hg	P			
			Cr	P			
			Br	---			
			Cr ⁶⁺	---			
			PBBs	---			
			PBDEs	---			
			DBP	---			
			BBP	---			
			DEHP	---			
			DIBP	---			
A-4	Silvery Metal Screw	Metal	Pb	P	---	Comply	/
			Cd	P			
			Hg	P			
			Cr	P			
			Br	---			
			Cr ⁶⁺	---			
			PBBs	---			
			PBDEs	---			
			DBP	---			
			BBP	---			
			DEHP	---			
			DIBP	---			



Part No.	Description	Material	X-ray Screening		Results of Chemical Test	Conclusion on RoHS EU	Sample Resubmitted
			Element	Data			
A-5	Silvery Metal Screw	Metal	Pb	P	---	Comply	/
			Cd	P			
			Hg	P			
			Cr	P			
			Br	---			
			Cr ⁶⁺	---			
			PBBs	---			
			PBDEs	---			
			DBP	---			
			BBP	---			
			DEHP	---			
			DIBP	---			
A-6	Black Metal Screw	Metal	Pb	P	---	Comply	/
			Cd	P			
			Hg	P			
			Cr	P			
			Br	---			
			Cr ⁶⁺	---			
			PBBs	---			
			PBDEs	---			
			DBP	---			
			BBP	---			
			DEHP	---			
			DIBP	---			
A-7	Black Glass Baffle	Composite	Pb	P	---	Comply	/
			Cd	P			
			Hg	P			
			Cr	P			
			Br	P			
			Cr ⁶⁺	---			
			PBBs	---			
			PBDEs	---			
			DBP	N.D.			
			BBP	N.D.			
			DEHP	N.D.			
			DIBP	N.D.			
A-8	Silvery Metal Case	Metal	Pb	P	---	Comply	/
			Cd	P			
			Hg	P			
			Cr	P			
			Br	---			
			Cr ⁶⁺	---			
			PBBs	---			
			PBDEs	---			
			DBP	---			
			BBP	---			
			DEHP	---			
			DIBP	---			



Part No.	Description	Material	X-ray Screening		Results of Chemical Test	Conclusion on RoHS EU	Sample Resubmitted
			Element	Data			
A-9	Silvery Metal Cover	Metal	Pb	P	Negative	Comply	/
			Cd	P			
			Hg	P			
			Cr	D			
			Br	---			
			Cr ⁶⁺	---			
			PBBs	---			
			PBDEs	---			
			DBP	---			
			BBP	---			
			DEHP	---			
			DIBP	---			
A-10	Silver-Gray Metal	Metal	Pb	F	303	Comply	/
			Cd	P			
			Hg	P			
			Cr	P			
			Br	---			
			Cr ⁶⁺	---			
			PBBs	---			
			PBDEs	---			
			DBP	---			
			BBP	---			
			DEHP	---			
			DIBP	---			
A-11	Gray Thermal Silicone	Composite	Pb	P	N.D. N.D. N.D. N.D.	Comply	/
			Cd	P			
			Hg	P			
			Cr	P			
			Br	P			
			Cr ⁶⁺	---			
			PBBs	---			
			PBDEs	---			
			DBP	---			
			BBP	---			
			DEHP	---			
			DIBP	---			
A-12	Camera Transparent Glass Baffle	Composite	Pb	P	N.D. N.D. N.D. N.D.	Comply	/
			Cd	P			
			Hg	P			
			Cr	P			
			Br	P			
			Cr ⁶⁺	---			
			PBBs	---			
			PBDEs	---			
			DBP	---			
			BBP	---			
			DEHP	---			
			DIBP	---			



Part No.	Description	Material	X-ray Screening		Results of Chemical Test	Conclusion on RoHS EU	Sample Resubmitted
			Element	Data			
A-13	Camera Black Glass Baffle	Composite	Pb	P	---	Comply	/
			Cd	P	---		
			Hg	P	---		
			Cr	P	---		
			Br	P	---		
			Cr ⁶⁺	---	---		
			PBBs	---	---		
			PBDEs	---	---		
			DBP	---	N.D.		
			BBP	---	N.D.		
			DEHP	---	N.D.		
DIBP	---	N.D.					
A-14	Camera Black Plastic Partition Board	Polymer	Pb	P	---	Comply	/
			Cd	P	---		
			Hg	P	---		
			Cr	P	---		
			Br	P	---		
			Cr ⁶⁺	---	---		
			PBBs	---	---		
			PBDEs	---	---		
			DBP	---	N.D.		
			BBP	---	N.D.		
			DEHP	---	N.D.		
DIBP	---	N.D.					
A-15	Camera Black Soft Plastic Pad	Polymer	Pb	P	---	Comply	/
			Cd	P	---		
			Hg	P	---		
			Cr	P	---		
			Br	P	---		
			Cr ⁶⁺	---	---		
			PBBs	---	---		
			PBDEs	---	---		
			DBP	---	N.D.		
			BBP	---	N.D.		
			DEHP	---	N.D.		
DIBP	---	N.D.					
A-16	Camera Black Metal Ring	Metal	Pb	P	---	Negative	Comply
			Cd	P	---		
			Hg	P	---		
			Cr	D	---		
			Br	---	---		
			Cr ⁶⁺	---	---		
			PBBs	---	---		
			PBDEs	---	---		
			DBP	---	---		
			BBP	---	---		
			DEHP	---	---		
DIBP	---	---					



Part No.	Description	Material	X-ray Screening		Results of Chemical Test	Conclusion on RoHS EU	Sample Resubmitted
			Element	Data			
A-17	Camera Black Metal Sleeve	Metal	Pb	P	Negative	Comply	/
			Cd	P			
			Hg	P			
			Cr	D			
			Br	---			
			Cr ⁶⁺	---			
			PBBs	---			
			PBDEs	---			
			DBP	---			
			BBP	---			
			DEHP	---			
DIBP	---						
A-18	Camera Black Plastic Holder	Polymer	Pb	P	N.D. N.D. N.D. N.D.	Comply	/
			Cd	P			
			Hg	P			
			Cr	P			
			Br	P			
			Cr ⁶⁺	---			
			PBBs	---			
			PBDEs	---			
			DBP	---			
			BBP	---			
			DEHP	---			
DIBP	---						
A-19	Camera Clear Glass Lens	Composite	Pb	P	N.D. N.D. N.D. N.D.	Comply	/
			Cd	P			
			Hg	P			
			Cr	P			
			Br	P			
			Cr ⁶⁺	---			
			PBBs	---			
			PBDEs	---			
			DBP	---			
			BBP	---			
			DEHP	---			
DIBP	---						
A-20	Camera Black Paper Gasket	Composite	Pb	P	N.D. N.D. N.D. N.D.	Comply	/
			Cd	P			
			Hg	P			
			Cr	D			
			Br	P			
			Cr ⁶⁺	---			
			PBBs	---			
			PBDEs	---			
			DBP	---			
			BBP	---			
			DEHP	---			
DIBP	---						



Part No.	Description	Material	X-ray Screening		Results of Chemical Test	Conclusion on RoHS EU	Sample Resubmitted
			Element	Data			
A-21	Camera Black Metal Ring	Metal	Pb	F	#2.67×10 ⁴	Comply	/
			Cd	P			
			Hg	P			
			Cr	P			
			Br	---			
			Cr ⁶⁺	---			
			PBBs	---			
			PBDEs	---			
			DBP	---			
			BBP	---			
			DEHP	---			
			DIBP	---			
A-22	Camera Clear Glass Lens	Composite	Pb	P	---	Comply	/
			Cd	P			
			Hg	P			
			Cr	P			
			Br	P			
			Cr ⁶⁺	---			
			PBBs	---			
			PBDEs	---			
			DBP	---			
			BBP	---			
			DEHP	---			
			DIBP	---			
A-23	Camera Optical Glass	Composite	Pb	P	---	Comply	/
			Cd	P			
			Hg	P			
			Cr	P			
			Br	P			
			Cr ⁶⁺	---			
			PBBs	---			
			PBDEs	---			
			DBP	---			
			BBP	---			
			DEHP	---			
			DIBP	---			
A-24	Camera Black Glass	Composite	Pb	P	---	Comply	/
			Cd	P			
			Hg	P			
			Cr	P			
			Br	D			
			Cr ⁶⁺	---			
			PBBs	---			
			PBDEs	---			
			DBP	---			
			BBP	---			
			DEHP	---			
			DIBP	---			



Part No.	Description	Material	X-ray Screening		Results of Chemical Test	Conclusion on RoHS EU	Sample Resubmitted
			Element	Data			
A-25	Black PCB	Composite	Pb	P	---	Comply	/
			Cd	P	---		
			Hg	P	---		
			Cr	P	---		
			Br	D	---		
			Cr ⁶⁺	---	---		
			PBBs	---	N.D.		
			PBDEs	---	N.D.		
			DBP	---	N.D.		
			BBP	---	N.D.		
			DEHP	---	N.D.		
DIBP	---	N.D.					
A-26	Camera Black Plastic Holder	Polymer	Pb	P	---	Comply	/
			Cd	P	---		
			Hg	P	---		
			Cr	P	---		
			Br	P	---		
			Cr ⁶⁺	---	---		
			PBBs	---	---		
			PBDEs	---	---		
			DBP	---	N.D.		
			BBP	---	N.D.		
			DEHP	---	N.D.		
DIBP	---	N.D.					
A-27	Camera Black Glass	Composite	Pb	P	---	Comply	/
			Cd	P	---		
			Hg	P	---		
			Cr	P	---		
			Br	P	---		
			Cr ⁶⁺	---	---		
			PBBs	---	---		
			PBDEs	---	---		
			DBP	---	N.D.		
			BBP	---	N.D.		
			DEHP	---	N.D.		
DIBP	---	N.D.					
A-28	Camera Black Metal Ring	Metal	Pb	P	---	Comply	/
			Cd	P	---		
			Hg	P	---		
			Cr	P	---		
			Br	---	---		
			Cr ⁶⁺	---	---		
			PBBs	---	---		
			PBDEs	---	---		
			DBP	---	---		
			BBP	---	---		
			DEHP	---	---		
DIBP	---	---					



Part No.	Description	Material	X-ray Screening		Results of Chemical Test	Conclusion on RoHS EU	Sample Resubmitted
			Element	Data			
A-29	Camera Black Paper Gasket	Composite	Pb	P	---	Comply	/
			Cd	P	---		
			Hg	P	---		
			Cr	P	---		
			Br	P	---		
			Cr ⁶⁺	---	---		
			PBBs	---	---		
			PBDEs	---	---		
			DBP	---	N.D.		
			BBP	---	N.D.		
			DEHP	---	N.D.		
DIBP	---	N.D.					
A-30	Camera Black Metal Gasket	Metal	Pb	P	---	Comply	/
			Cd	P	---		
			Hg	P	---		
			Cr	P	---		
			Br	---	---		
			Cr ⁶⁺	---	---		
			PBBs	---	---		
			PBDEs	---	---		
			DBP	---	---		
			BBP	---	---		
			DEHP	---	---		
DIBP	---	---					
A-31	Camera Stained Glass Lens	Composite	Pb	P	---	Comply	/
			Cd	P	---		
			Hg	P	---		
			Cr	D	---		
			Br	P	---		
			Cr ⁶⁺	---	N.D.		
			PBBs	---	---		
			PBDEs	---	---		
			DBP	---	N.D.		
			BBP	---	N.D.		
			DEHP	---	N.D.		
DIBP	---	N.D.					
A-32	Camera Optical Glass	Composite	Pb	P	---	Comply	/
			Cd	P	---		
			Hg	P	---		
			Cr	P	---		
			Br	P	---		
			Cr ⁶⁺	---	---		
			PBBs	---	---		
			PBDEs	---	---		
			DBP	---	N.D.		
			BBP	---	N.D.		
			DEHP	---	N.D.		
DIBP	---	N.D.					



Part No.	Description	Material	X-ray Screening		Results of Chemical Test	Conclusion on RoHS EU	Sample Resubmitted
			Element	Data			
A-33	Photoflash Lamp Black Plastic Holder	Polymer	Pb	P	---	Comply	/
			Cd	P	---		
			Hg	P	---		
			Cr	P	---		
			Br	P	---		
			Cr ⁶⁺	---	---		
			PBBs	---	---		
			PBDEs	---	---		
			DBP	---	N.D.		
			BBP	---	N.D.		
			DEHP	---	N.D.		
			DIBP	---	N.D.		
A-34	Photoflash Lamp Transparent Plastic Baffle	Polymer	Pb	P	---	Comply	/
			Cd	P	---		
			Hg	P	---		
			Cr	P	---		
			Br	P	---		
			Cr ⁶⁺	---	---		
			PBBs	---	---		
			PBDEs	---	---		
			DBP	---	N.D.		
			BBP	---	N.D.		
			DEHP	---	N.D.		
			DIBP	---	N.D.		
A-35	Photoflash Lamp Color Plastic	Polymer	Pb	P	---	Comply	/
			Cd	P	---		
			Hg	P	---		
			Cr	P	---		
			Br	P	---		
			Cr ⁶⁺	---	---		
			PBBs	---	---		
			PBDEs	---	---		
			DBP	---	N.D.		
			BBP	---	N.D.		
			DEHP	---	N.D.		
			DIBP	---	N.D.		
A-36	Silvery Metal Shielding Case	Metal	Pb	P	---	Comply	/
			Cd	P	---		
			Hg	P	---		
			Cr	P	---		
			Br	---	---		
			Cr ⁶⁺	---	---		
			PBBs	---	---		
			PBDEs	---	---		
			DBP	---	---		
			BBP	---	---		
			DEHP	---	---		
			DIBP	---	---		



Part No.	Description	Material	X-ray Screening		Results of Chemical Test	Conclusion on RoHS EU	Sample Resubmitted
			Element	Data			
A-37	Black IC	Composite	Pb	P	---	Comply	/
			Cd	P	---		
			Hg	P	---		
			Cr	P	---		
			Br	P	---		
			Cr ⁶⁺	---	---		
			PBBs	---	---		
			PBDEs	---	---		
			DBP	---	N.D.		
			BBP	---	N.D.		
			DEHP	---	N.D.		
			DIBP	---	N.D.		
A-38	Black IC	Composite	Pb	P	---	Comply	/
			Cd	P	---		
			Hg	P	---		
			Cr	P	---		
			Br	P	---		
			Cr ⁶⁺	---	---		
			PBBs	---	---		
			PBDEs	---	---		
			DBP	---	N.D.		
			BBP	---	N.D.		
			DEHP	---	N.D.		
			DIBP	---	N.D.		
A-39	Black IC	Composite	Pb	P	---	Comply	/
			Cd	P	---		
			Hg	P	---		
			Cr	P	---		
			Br	P	---		
			Cr ⁶⁺	---	---		
			PBBs	---	---		
			PBDEs	---	---		
			DBP	---	N.D.		
			BBP	---	N.D.		
			DEHP	---	N.D.		
			DIBP	---	N.D.		
A-40	Bright Black IC	Composite	Pb	P	---	Comply	/
			Cd	P	---		
			Hg	P	---		
			Cr	P	---		
			Br	P	---		
			Cr ⁶⁺	---	---		
			PBBs	---	---		
			PBDEs	---	---		
			DBP	---	N.D.		
			BBP	---	N.D.		
			DEHP	---	N.D.		
			DIBP	---	N.D.		



Part No.	Description	Material	X-ray Screening		Results of Chemical Test	Conclusion on RoHS EU	Sample Resubmitted
			Element	Data			
A-41	Chip Crystal Oscillator	Composite	Pb	P	---	Comply	/
			Cd	P	---		
			Hg	P	---		
			Cr	P	---		
			Br	P	---		
			Cr ⁶⁺	---	---		
			PBBs	---	---		
			PBDEs	---	---		
			DBP	---	N.D.		
			BBP	---	N.D.		
			DEHP	---	N.D.		
			DIBP	---	N.D.		
A-42	Black Diode	Composite	Pb	P	---	Comply	/
			Cd	P	---		
			Hg	P	---		
			Cr	P	---		
			Br	P	---		
			Cr ⁶⁺	---	---		
			PBBs	---	---		
			PBDEs	---	---		
			DBP	---	N.D.		
			BBP	---	N.D.		
			DEHP	---	N.D.		
			DIBP	---	N.D.		
A-43	Black Triode	Composite	Pb	P	---	Comply	/
			Cd	P	---		
			Hg	P	---		
			Cr	P	---		
			Br	P	---		
			Cr ⁶⁺	---	---		
			PBBs	---	---		
			PBDEs	---	---		
			DBP	---	N.D.		
			BBP	---	N.D.		
			DEHP	---	N.D.		
			DIBP	---	N.D.		
A-44	Brown Ceramic Inductor	Composite	Pb	P	---	Comply	/
			Cd	P	---		
			Hg	P	---		
			Cr	D	---		
			Br	P	---		
			Cr ⁶⁺	---	N.D.		
			PBBs	---	---		
			PBDEs	---	---		
			DBP	---	N.D.		
			BBP	---	N.D.		
			DEHP	---	N.D.		
			DIBP	---	N.D.		



Part No.	Description	Material	X-ray Screening		Results of Chemical Test	Conclusion on RoHS EU	Sample Resubmitted
			Element	Data			
A-45	Chip Capacitor	Composite	Pb	P	---	Comply	/
			Cd	P	---		
			Hg	P	---		
			Cr	P	---		
			Br	P	---		
			Cr ⁶⁺	---	---		
			PBBs	---	---		
			PBDEs	---	---		
			DBP	---	N.D.		
			BBP	---	N.D.		
			DEHP	---	N.D.		
DIBP	---	N.D.					
A-46	Tin Solder	Metal	Pb	P	---	Comply	/
			Cd	P	---		
			Hg	P	---		
			Cr	P	---		
			Br	---	---		
			Cr ⁶⁺	---	---		
			PBBs	---	---		
			PBDEs	---	---		
			DBP	---	---		
			BBP	---	---		
			DEHP	---	---		
DIBP	---	---					
A-47	Black PCB	Composite	Pb	P	---	Comply	/
			Cd	P	---		
			Hg	P	---		
			Cr	P	---		
			Br	P	---		
			Cr ⁶⁺	---	---		
			PBBs	---	---		
			PBDEs	---	---		
			DBP	---	N.D.		
			BBP	---	N.D.		
			DEHP	---	N.D.		
DIBP	---	N.D.					
A-48	Black FPC	Composite	Pb	P	---	Comply	/
			Cd	P	---		
			Hg	P	---		
			Cr	P	---		
			Br	P	---		
			Cr ⁶⁺	---	---		
			PBBs	---	---		
			PBDEs	---	---		
			DBP	---	N.D.		
			BBP	---	N.D.		
			DEHP	---	N.D.		
DIBP	---	N.D.					



Part No.	Description	Material	X-ray Screening		Results of Chemical Test	Conclusion on RoHS EU	Sample Resubmitted
			Element	Data			
A-49	Silvery Metal Sheet	Metal	Pb	P	Negative	Comply	/
			Cd	P			
			Hg	P			
			Cr	D			
			Br	---			
			Cr ⁶⁺	---			
			PBBs	---			
			PBDEs	---			
			DBP	---			
			BBP	---			
			DEHP	---			
			DIBP	---			
A-50	Black Soft Plastic Cover	Polymer	Pb	P	N.D.	Comply	/
			Cd	P			
			Hg	P			
			Cr	P			
			Br	P			
			Cr ⁶⁺	---			
			PBBs	---			
			PBDEs	---			
			DBP	---			
			BBP	---			
			DEHP	---			
			DIBP	---			
A-51	LED	Composite	Pb	P	N.D.	Comply	/
			Cd	P			
			Hg	P			
			Cr	D			
			Br	P			
			Cr ⁶⁺	---			
			PBBs	---			
			PBDEs	---			
			DBP	---			
			BBP	---			
			DEHP	---			
			DIBP	---			
A-52	Ribbon Cable Interface Black Plastic	Polymer	Pb	P	N.D.	Comply	/
			Cd	P			
			Hg	P			
			Cr	P			
			Br	D			
			Cr ⁶⁺	---			
			PBBs	---			
			PBDEs	---			
			DBP	---			
			BBP	---			
			DEHP	---			
			DIBP	---			



Part No.	Description	Material	X-ray Screening		Results of Chemical Test	Conclusion on RoHS EU	Sample Resubmitted
			Element	Data			
A-53	Ribbon Cable Interface Silvery Metal Pin	Metal	Pb	P	---	Comply	/
			Cd	P	---		
			Hg	P	---		
			Cr	P	---		
			Br	---	---		
			Cr ⁶⁺	---	---		
			PBBs	---	---		
			PBDEs	---	---		
			DBP	---	---		
			BBP	---	---		
			DEHP	---	---		
DIBP	---	---					
A-54	Ribbon Cable Interface Beige Plastic	Polymer	Pb	P	---	Comply	/
			Cd	P	---		
			Hg	P	---		
			Cr	P	---		
			Br	D	---		
			Cr ⁶⁺	---	---		
			PBBs	---	N.D.		
			PBDEs	---	N.D.		
			DBP	---	N.D.		
			BBP	---	N.D.		
			DEHP	---	N.D.		
DIBP	---	N.D.					
A-55	Ribbon Cable Interface Silvery Metal Pin	Metal	Pb	P	---	Comply	/
			Cd	P	---		
			Hg	P	---		
			Cr	P	---		
			Br	---	---		
			Cr ⁶⁺	---	---		
			PBBs	---	---		
			PBDEs	---	---		
			DBP	---	---		
			BBP	---	---		
			DEHP	---	---		
DIBP	---	---					
A-56	Ribbon Cable Interface Creamy White Plastic	Polymer	Pb	P	---	Comply	/
			Cd	P	---		
			Hg	P	---		
			Cr	P	---		
			Br	P	---		
			Cr ⁶⁺	---	---		
			PBBs	---	---		
			PBDEs	---	---		
			DBP	---	N.D.		
			BBP	---	N.D.		
			DEHP	---	N.D.		
DIBP	---	N.D.					



Part No.	Description	Material	X-ray Screening		Results of Chemical Test	Conclusion on RoHS EU	Sample Resubmitted
			Element	Data			
A-57	Silvery Metal Pin	Metal	Pb	P	---	Comply	/
			Cd	P			
			Hg	P			
			Cr	P			
			Br	---			
			Cr ⁶⁺	---			
			PBBs	---			
			PBDEs	---			
			DBP	---			
			BBP	---			
			DEHP	---			
			DIBP	---			
A-58	Power Outlet Silvery Metal Case	Metal	Pb	P	---	Comply	/
			Cd	P			
			Hg	P			
			Cr	P			
			Br	---			
			Cr ⁶⁺	---			
			PBBs	---			
			PBDEs	---			
			DBP	---			
			BBP	---			
			DEHP	---			
			DIBP	---			
A-59	Supply Socket Black Plastic	Polymer	Pb	P	---	Comply	/
			Cd	P			
			Hg	P			
			Cr	P			
			Br	P			
			Cr ⁶⁺	---			
			PBBs	---			
			PBDEs	---			
			DBP	N.D.			
			BBP	N.D.			
			DEHP	N.D.			
			DIBP	N.D.			
A-60	Supply Socket Bright Silvery Metal Insert	Metal	Pb	P	---	Comply	/
			Cd	P			
			Hg	P			
			Cr	P			
			Br	---			
			Cr ⁶⁺	---			
			PBBs	---			
			PBDEs	---			
			DBP	---			
			BBP	---			
			DEHP	---			
			DIBP	---			



Part No.	Description	Material	X-ray Screening		Results of Chemical Test	Conclusion on RoHS EU	Sample Resubmitted
			Element	Data			
A-61	Supply Socket Golden Metal Pin	Metal	Pb	F	#1.93×10 ⁴	Comply	/
			Cd	P			
			Hg	P			
			Cr	P			
			Br	---			
			Cr ⁶⁺	---			
			PBBs	---			
			PBDEs	---			
			DBP	---			
			BBP	---			
			DEHP	---			
			DIBP	---			
A-62	Type-C Interface Silvery Metal Case	Metal	Pb	P	Negative	Comply	/
			Cd	P			
			Hg	P			
			Cr	D			
			Br	---			
			Cr ⁶⁺	---			
			PBBs	---			
			PBDEs	---			
			DBP	---			
			BBP	---			
			DEHP	---			
			DIBP	---			
A-63	Type-C Interface Black Plastic	Polymer	Pb	P	N.D. N.D. N.D. N.D.	Comply	/
			Cd	P			
			Hg	P			
			Cr	P			
			Br	P			
			Cr ⁶⁺	---			
			PBBs	---			
			PBDEs	---			
			DBP	---			
			BBP	---			
			DEHP	---			
			DIBP	---			
A-64	Type-C Interface Silvery Metal Sheet	Metal	Pb	P	Negative	Comply	/
			Cd	P			
			Hg	P			
			Cr	D			
			Br	---			
			Cr ⁶⁺	---			
			PBBs	---			
			PBDEs	---			
			DBP	---			
			BBP	---			
			DEHP	---			
			DIBP	---			



Part No.	Description	Material	X-ray Screening		Results of Chemical Test	Conclusion on RoHS EU	Sample Resubmitted
			Element	Data			
A-65	Type-C Interface Silvery Metal Pin	Metal	Pb	P	---	Comply	/
			Cd	P			
			Hg	P			
			Cr	P			
			Br	---			
			Cr ⁶⁺	---			
			PBBs	---			
			PBDEs	---			
			DBP	---			
			BBP	---			
			DEHP	---			
			DIBP	---			
A-66	Button Silvery Metal	Metal	Pb	P	Negative	Comply	/
			Cd	P			
			Hg	P			
			Cr	D			
			Br	---			
			Cr ⁶⁺	---			
			PBBs	---			
			PBDEs	---			
			DBP	---			
			BBP	---			
			DEHP	---			
			DIBP	---			
A-67	Button Beige Plastic	Polymer	Pb	P	N.D. N.D. N.D. N.D.	Comply	/
			Cd	P			
			Hg	P			
			Cr	P			
			Br	P			
			Cr ⁶⁺	---			
			PBBs	---			
			PBDEs	---			
			DBP	---			
			BBP	---			
			DEHP	---			
			DIBP	---			
A-68	Button Silvery Metal Shrapnel	Metal	Pb	P	Negative	Comply	/
			Cd	P			
			Hg	P			
			Cr	D			
			Br	---			
			Cr ⁶⁺	---			
			PBBs	---			
			PBDEs	---			
			DBP	---			
			BBP	---			
			DEHP	---			
			DIBP	---			



Part No.	Description	Material	X-ray Screening		Results of Chemical Test	Conclusion on RoHS EU	Sample Resubmitted
			Element	Data			
A-69	Button Black Plastic	Polymer	Pb	P	---	Comply	/
			Cd	P	---		
			Hg	P	---		
			Cr	P	---		
			Br	P	---		
			Cr ⁶⁺	---	---		
			PBBs	---	---		
			PBDEs	---	---		
			DBP	---	N.D.		
			BBP	---	N.D.		
			DEHP	---	N.D.		
			DIBP	---	N.D.		
A-70	Black IC	Composite	Pb	P	---	Comply	/
			Cd	P	---		
			Hg	P	---		
			Cr	P	---		
			Br	P	---		
			Cr ⁶⁺	---	---		
			PBBs	---	---		
			PBDEs	---	---		
			DBP	---	N.D.		
			BBP	---	N.D.		
			DEHP	---	N.D.		
			DIBP	---	N.D.		
A-71	Black IC	Composite	Pb	P	---	Comply	/
			Cd	P	---		
			Hg	P	---		
			Cr	P	---		
			Br	P	---		
			Cr ⁶⁺	---	---		
			PBBs	---	---		
			PBDEs	---	---		
			DBP	---	N.D.		
			BBP	---	N.D.		
			DEHP	---	N.D.		
			DIBP	---	N.D.		
A-72	Black IC	Composite	Pb	P	---	Comply	/
			Cd	P	---		
			Hg	P	---		
			Cr	P	---		
			Br	P	---		
			Cr ⁶⁺	---	---		
			PBBs	---	---		
			PBDEs	---	---		
			DBP	---	N.D.		
			BBP	---	N.D.		
			DEHP	---	N.D.		
			DIBP	---	N.D.		



Part No.	Description	Material	X-ray Screening		Results of Chemical Test	Conclusion on RoHS EU	Sample Resubmitted
			Element	Data			
A-73	Black IC	Composite	Pb	P	---	Comply	/
			Cd	P	---		
			Hg	P	---		
			Cr	P	---		
			Br	P	---		
			Cr ⁶⁺	---	---		
			PBBs	---	---		
			PBDEs	---	---		
			DBP	---	N.D.		
			BBP	---	N.D.		
			DEHP	---	N.D.		
			DIBP	---	N.D.		
A-74	Black IC	Composite	Pb	P	---	Comply	/
			Cd	P	---		
			Hg	P	---		
			Cr	P	---		
			Br	P	---		
			Cr ⁶⁺	---	---		
			PBBs	---	---		
			PBDEs	---	---		
			DBP	---	N.D.		
			BBP	---	N.D.		
			DEHP	---	N.D.		
			DIBP	---	N.D.		
A-75	Black IC	Composite	Pb	P	---	Comply	/
			Cd	P	---		
			Hg	P	---		
			Cr	P	---		
			Br	P	---		
			Cr ⁶⁺	---	---		
			PBBs	---	---		
			PBDEs	---	---		
			DBP	---	N.D.		
			BBP	---	N.D.		
			DEHP	---	N.D.		
			DIBP	---	N.D.		
A-76	Black IC	Composite	Pb	P	---	Comply	/
			Cd	P	---		
			Hg	P	---		
			Cr	P	---		
			Br	P	---		
			Cr ⁶⁺	---	---		
			PBBs	---	---		
			PBDEs	---	---		
			DBP	---	N.D.		
			BBP	---	N.D.		
			DEHP	---	N.D.		
			DIBP	---	N.D.		



Part No.	Description	Material	X-ray Screening		Results of Chemical Test	Conclusion on RoHS EU	Sample Resubmitted
			Element	Data			
A-77	Black IC	Composite	Pb	P	---	Comply	/
			Cd	P	---		
			Hg	P	---		
			Cr	P	---		
			Br	P	---		
			Cr ⁶⁺	---	---		
			PBBs	---	---		
			PBDEs	---	---		
			DBP	---	N.D.		
			BBP	---	N.D.		
			DEHP	---	N.D.		
DIBP	---	N.D.					
A-78	Chip Crystal Oscillator	Composite	Pb	P	---	Comply	/
			Cd	P	---		
			Hg	P	---		
			Cr	P	---		
			Br	P	---		
			Cr ⁶⁺	---	---		
			PBBs	---	---		
			PBDEs	---	---		
			DBP	---	N.D.		
			BBP	---	N.D.		
			DEHP	---	N.D.		
DIBP	---	N.D.					
A-79	Black Diode	Composite	Pb	P	---	Comply	/
			Cd	P	---		
			Hg	P	---		
			Cr	P	---		
			Br	P	---		
			Cr ⁶⁺	---	---		
			PBBs	---	---		
			PBDEs	---	---		
			DBP	---	N.D.		
			BBP	---	N.D.		
			DEHP	---	N.D.		
DIBP	---	N.D.					
A-80	Black Diode	Composite	Pb	P	---	Comply	/
			Cd	P	---		
			Hg	P	---		
			Cr	P	---		
			Br	P	---		
			Cr ⁶⁺	---	---		
			PBBs	---	---		
			PBDEs	---	---		
			DBP	---	N.D.		
			BBP	---	N.D.		
			DEHP	---	N.D.		
DIBP	---	N.D.					



Part No.	Description	Material	X-ray Screening		Results of Chemical Test	Conclusion on RoHS EU	Sample Resubmitted
			Element	Data			
A-81	Black Diode	Composite	Pb	P	---	Comply	/
			Cd	P	---		
			Hg	P	---		
			Cr	P	---		
			Br	P	---		
			Cr ⁶⁺	---	---		
			PBBs	---	---		
			PBDEs	---	---		
			DBP	---	N.D.		
			BBP	---	N.D.		
			DEHP	---	N.D.		
DIBP	---	N.D.					
A-82	Black Diode	Composite	Pb	P	---	Comply	/
			Cd	P	---		
			Hg	P	---		
			Cr	P	---		
			Br	P	---		
			Cr ⁶⁺	---	---		
			PBBs	---	---		
			PBDEs	---	---		
			DBP	---	N.D.		
			BBP	---	N.D.		
			DEHP	---	N.D.		
DIBP	---	N.D.					
A-83	Black Triode	Composite	Pb	P	---	Comply	/
			Cd	P	---		
			Hg	P	---		
			Cr	P	---		
			Br	P	---		
			Cr ⁶⁺	---	---		
			PBBs	---	---		
			PBDEs	---	---		
			DBP	---	N.D.		
			BBP	---	N.D.		
			DEHP	---	N.D.		
DIBP	---	N.D.					
A-84	Black Ceramic Inductor	Composite	Pb	P	---	Comply	/
			Cd	P	---		
			Hg	P	---		
			Cr	P	---		
			Br	P	---		
			Cr ⁶⁺	---	---		
			PBBs	---	---		
			PBDEs	---	---		
			DBP	---	N.D.		
			BBP	---	N.D.		
			DEHP	---	N.D.		
DIBP	---	N.D.					



Part No.	Description	Material	X-ray Screening		Results of Chemical Test	Conclusion on RoHS EU	Sample Resubmitted
			Element	Data			
A-85	Grey Ceramic Inductor	Composite	Pb	P	---	Comply	/
			Cd	P	---		
			Hg	P	---		
			Cr	D	---		
			Br	P	---		
			Cr ⁶⁺	---	N.D.		
			PBBs	---	---		
			PBDEs	---	---		
			DBP	---	N.D.		
			BBP	---	N.D.		
			DEHP	---	N.D.		
		DIBP	---	N.D.			
A-86	Brown Ceramic Inductor	Composite	Pb	P	---	Comply	/
			Cd	P	---		
			Hg	P	---		
			Cr	D	---		
			Br	P	---		
			Cr ⁶⁺	---	N.D.		
			PBBs	---	---		
			PBDEs	---	---		
			DBP	---	N.D.		
			BBP	---	N.D.		
			DEHP	---	N.D.		
		DIBP	---	N.D.			
A-87	Chip Capacitor	Composite	Pb	P	---	Comply	/
			Cd	P	---		
			Hg	P	---		
			Cr	P	---		
			Br	P	---		
			Cr ⁶⁺	---	---		
			PBBs	---	---		
			PBDEs	---	---		
			DBP	---	N.D.		
			BBP	---	N.D.		
			DEHP	---	N.D.		
		DIBP	---	N.D.			
A-88	Chip Capacitor	Composite	Pb	P	---	Comply	/
			Cd	P	---		
			Hg	P	---		
			Cr	P	---		
			Br	P	---		
			Cr ⁶⁺	---	---		
			PBBs	---	---		
			PBDEs	---	---		
			DBP	---	N.D.		
			BBP	---	N.D.		
			DEHP	---	N.D.		
		DIBP	---	N.D.			



Part No.	Description	Material	X-ray Screening		Results of Chemical Test	Conclusion on RoHS EU	Sample Resubmitted
			Element	Data			
A-89	Chip Capacitor	Composite	Pb	P	---	Comply	/
			Cd	P	---		
			Hg	P	---		
			Cr	P	---		
			Br	P	---		
			Cr ⁶⁺	---	---		
			PBBs	---	---		
			PBDEs	---	---		
			DBP	---	N.D.		
			BBP	---	N.D.		
			DEHP	---	N.D.		
DIBP	---	N.D.					
A-90	Chip Capacitor	Composite	Pb	P	---	Comply	/
			Cd	P	---		
			Hg	P	---		
			Cr	P	---		
			Br	P	---		
			Cr ⁶⁺	---	---		
			PBBs	---	---		
			PBDEs	---	---		
			DBP	---	N.D.		
			BBP	---	N.D.		
			DEHP	---	N.D.		
DIBP	---	N.D.					
A-91	Chip Resistor	Composite	Pb	P	---	Comply	/
			Cd	P	---		
			Hg	P	---		
			Cr	P	---		
			Br	P	---		
			Cr ⁶⁺	---	---		
			PBBs	---	---		
			PBDEs	---	---		
			DBP	---	N.D.		
			BBP	---	N.D.		
			DEHP	---	N.D.		
DIBP	---	N.D.					
A-92	Chip Resistor	Composite	Pb	P	---	Comply	/
			Cd	P	---		
			Hg	P	---		
			Cr	D	---		
			Br	P	---		
			Cr ⁶⁺	---	N.D.		
			PBBs	---	---		
			PBDEs	---	---		
			DBP	---	N.D.		
			BBP	---	N.D.		
			DEHP	---	N.D.		
DIBP	---	N.D.					



Part No.	Description	Material	X-ray Screening		Results of Chemical Test	Conclusion on RoHS EU	Sample Resubmitted
			Element	Data			
A-93	Chip Resistor	Composite	Pb	P	---	Comply	/
			Cd	P	---		
			Hg	P	---		
			Cr	D	---		
			Br	P	---		
			Cr ⁶⁺	---	N.D.		
			PBBs	---	---		
			PBDEs	---	---		
			DBP	---	N.D.		
			BBP	---	N.D.		
			DEHP	---	N.D.		
			DIBP	---	N.D.		
A-94	Tin Solder	Metal	Pb	P	---	Comply	/
			Cd	P	---		
			Hg	P	---		
			Cr	P	---		
			Br	---	---		
			Cr ⁶⁺	---	---		
			PBBs	---	---		
			PBDEs	---	---		
			DBP	---	---		
			BBP	---	---		
			DEHP	---	---		
			DIBP	---	---		
A-95	Black PCB	Composite	Pb	P	---	Comply	/
			Cd	P	---		
			Hg	P	---		
			Cr	P	---		
			Br	P	---		
			Cr ⁶⁺	---	---		
			PBBs	---	---		
			PBDEs	---	---		
			DBP	---	N.D.		
			BBP	---	N.D.		
			DEHP	---	N.D.		
			DIBP	---	N.D.		
B-1	Black Plastic Shell	Polymer	Pb	P	---	Comply	/
			Cd	P	---		
			Hg	P	---		
			Cr	P	---		
			Br	P	---		
			Cr ⁶⁺	---	---		
			PBBs	---	---		
			PBDEs	---	---		
			DBP	---	N.D.		
			BBP	---	N.D.		
			DEHP	---	N.D.		
			DIBP	---	N.D.		



Part No.	Description	Material	X-ray Screening		Results of Chemical Test	Conclusion on RoHS EU	Sample Resubmitted
			Element	Data			
B-2	Silvery Metal Plug	Metal	Pb	P	---	Comply	/
			Cd	P			
			Hg	P			
			Cr	P			
			Br	---			
			Cr ⁶⁺	---			
			PBBs	---			
			PBDEs	---			
			DBP	---			
			BBP	---			
			DEHP	---			
			DIBP	---			
B-3	Black Plastic Barrier	Polymer	Pb	P	---	Comply	/
			Cd	P			
			Hg	P			
			Cr	P			
			Br	P			
			Cr ⁶⁺	---			
			PBBs	---			
			PBDEs	---			
			DBP	N.D.			
			BBP	N.D.			
			DEHP	N.D.			
			DIBP	N.D.			
B-4	Black Soft Plastic	Polymer	Pb	P	---	Comply	/
			Cd	P			
			Hg	P			
			Cr	P			
			Br	P			
			Cr ⁶⁺	---			
			PBBs	---			
			PBDEs	---			
			DBP	N.D.			
			BBP	N.D.			
			DEHP	N.D.			
			DIBP	N.D.			
B-5	Silvery Metal Case	Metal	Pb	P	---	Comply	/
			Cd	P			
			Hg	P			
			Cr	P			
			Br	---			
			Cr ⁶⁺	---			
			PBBs	---			
			PBDEs	---			
			DBP	---			
			BBP	---			
			DEHP	---			
			DIBP	---			



Part No.	Description	Material	X-ray Screening		Results of Chemical Test	Conclusion on RoHS EU	Sample Resubmitted
			Element	Data			
B-6	Black Plastic	Polymer	Pb	P	---	Comply	/
			Cd	P	---		
			Hg	P	---		
			Cr	P	---		
			Br	D	---		
			Cr ⁶⁺	---	---		
			PBBs	---	N.D.		
			PBDEs	---	N.D.		
			DBP	---	N.D.		
			BBP	---	N.D.		
			DEHP	---	N.D.		
DIBP	---	N.D.					
B-7	Silvery Metal Plug	Metal	Pb	P	---	Comply	/
			Cd	P	---		
			Hg	P	---		
			Cr	P	---		
			Br	---	---		
			Cr ⁶⁺	---	---		
			PBBs	---	---		
			PBDEs	---	---		
			DBP	---	---		
			BBP	---	---		
			DEHP	---	---		
DIBP	---	---					
B-8	Tin Solder	Metal	Pb	P	---	Comply	/
			Cd	P	---		
			Hg	P	---		
			Cr	P	---		
			Br	---	---		
			Cr ⁶⁺	---	---		
			PBBs	---	---		
			PBDEs	---	---		
			DBP	---	---		
			BBP	---	---		
			DEHP	---	---		
DIBP	---	---					
B-9	Black Plastic Wire Jacket	Polymer	Pb	P	---	Comply	/
			Cd	P	---		
			Hg	P	---		
			Cr	D	---		
			Br	P	---		
			Cr ⁶⁺	---	N.D.		
			PBBs	---	---		
			PBDEs	---	---		
			DBP	---	N.D.		
			BBP	---	N.D.		
			DEHP	---	N.D.		
DIBP	---	N.D.					



Part No.	Description	Material	X-ray Screening		Results of Chemical Test	Conclusion on RoHS EU	Sample Resubmitted
			Element	Data			
B-10	Red Inner Wire Jacket	Polymer	Pb	P	---	Comply	/
			Cd	P	---		
			Hg	P	---		
			Cr	P	---		
			Br	P	---		
			Cr ⁶⁺	---	---		
			PBBs	---	---		
			PBDEs	---	---		
			DBP	---	N.D.		
			BBP	---	N.D.		
			DEHP	---	N.D.		
			DIBP	---	N.D.		
B-11	Black Inner Wire Jacket	Polymer	Pb	P	---	Comply	/
			Cd	P	---		
			Hg	P	---		
			Cr	P	---		
			Br	P	---		
			Cr ⁶⁺	---	---		
			PBBs	---	---		
			PBDEs	---	---		
			DBP	---	N.D.		
			BBP	---	N.D.		
			DEHP	---	N.D.		
			DIBP	---	N.D.		
B-12	Copper-Colored Metal Core	Metal	Pb	P	---	Comply	/
			Cd	P	---		
			Hg	P	---		
			Cr	P	---		
			Br	---	---		
			Cr ⁶⁺	---	---		
			PBBs	---	---		
			PBDEs	---	---		
			DBP	---	---		
			BBP	---	---		
			DEHP	---	---		
			DIBP	---	---		
B-13	Silvery Metal Screw With Spacers	Metal	Pb	P	---	Negative	Comply
			Cd	P	---		
			Hg	P	---		
			Cr	D	---		
			Br	---	---		
			Cr ⁶⁺	---	---		
			PBBs	---	---		
			PBDEs	---	---		
			DBP	---	---		
			BBP	---	---		
			DEHP	---	---		
			DIBP	---	---		



Part No.	Description	Material	X-ray Screening		Results of Chemical Test	Conclusion on RoHS EU	Sample Resubmitted
			Element	Data			
B-14	Silver Cooling Metal Plate	Metal	Pb	P	---	Comply	/
			Cd	P			
			Hg	P			
			Cr	P			
			Br	---			
			Cr ⁶⁺	---			
			PBBs	---			
			PBDEs	---			
			DBP	---			
			BBP	---			
			DEHP	---			
			DIBP	---			
B-15	Electrolytic Capacitor Black Plastic Jacket	Polymer	Pb	P	---	Comply	/
			Cd	P			
			Hg	P			
			Cr	P			
			Br	P			
			Cr ⁶⁺	---			
			PBBs	---			
			PBDEs	---			
			DBP	N.D.			
			BBP	N.D.			
			DEHP	N.D.			
			DIBP	N.D.			
B-16	Electrolytic Capacitor Silvery Metal Case	Metal	Pb	P	---	Comply	/
			Cd	P			
			Hg	P			
			Cr	P			
			Br	---			
			Cr ⁶⁺	---			
			PBBs	---			
			PBDEs	---			
			DBP	---			
			BBP	---			
			DEHP	---			
			DIBP	---			
B-17	Electrolytic Capacitor Black Soft Plastic Pad	Polymer	Pb	P	---	Comply	/
			Cd	P			
			Hg	P			
			Cr	P			
			Br	P			
			Cr ⁶⁺	---			
			PBBs	---			
			PBDEs	---			
			DBP	N.D.			
			BBP	N.D.			
			DEHP	N.D.			
			DIBP	N.D.			



Part No.	Description	Material	X-ray Screening		Results of Chemical Test	Conclusion on RoHS EU	Sample Resubmitted
			Element	Data			
B-18	Electrolytic Capacitor Brown Electrolyte	Composite	Pb	P	---	Comply	/
			Cd	P			
			Hg	P			
			Cr	P			
			Br	P			
			Cr ⁶⁺	---			
			PBBs	---			
			PBDEs	---			
			DBP	---			
			BBP	---			
			DEHP	---			
			DIBP	---			
B-19	Electrolytic Capacitor Silvery Metal Electrode	Metal	Pb	P	Negative	Comply	/
			Cd	P			
			Hg	P			
			Cr	D			
			Br	---			
			Cr ⁶⁺	---			
			PBBs	---			
			PBDEs	---			
			DBP	---			
			BBP	---			
			DEHP	---			
			DIBP	---			
B-20	Electrolytic Capacitor Green Wire Jacket	Polymer	Pb	P	---	Comply	/
			Cd	P			
			Hg	P			
			Cr	P			
			Br	P			
			Cr ⁶⁺	---			
			PBBs	---			
			PBDEs	---			
			DBP	---			
			BBP	---			
			DEHP	---			
			DIBP	---			
B-21	Electrolytic Capacitor Silvery Metal Case	Metal	Pb	P	---	Comply	/
			Cd	P			
			Hg	P			
			Cr	P			
			Br	---			
			Cr ⁶⁺	---			
			PBBs	---			
			PBDEs	---			
			DBP	---			
			BBP	---			
			DEHP	---			
			DIBP	---			



Part No.	Description	Material	X-ray Screening		Results of Chemical Test	Conclusion on RoHS EU	Sample Resubmitted
			Element	Data			
B-22	Electrolytic Capacitor Black Soft Plastic Pad	Polymer	Pb	P	---	Comply	/
			Cd	P	---		
			Hg	P	---		
			Cr	P	---		
			Br	P	---		
			Cr ⁶⁺	---	---		
			PBBs	---	---		
			PBDEs	---	---		
			DBP	---	N.D.		
			BBP	---	N.D.		
			DEHP	---	N.D.		
		DIBP	---	N.D.			
B-23	Electrolytic Capacitor Brown Electrolyte	Composite	Pb	P	---	Comply	/
			Cd	P	---		
			Hg	P	---		
			Cr	P	---		
			Br	P	---		
			Cr ⁶⁺	---	---		
			PBBs	---	---		
			PBDEs	---	---		
			DBP	---	N.D.		
			BBP	---	N.D.		
			DEHP	---	N.D.		
		DIBP	---	N.D.			
B-24	Electrolytic Capacitor Silvery Metal Electrode	Metal	Pb	P	---	Comply	/
			Cd	P	---		
			Hg	P	---		
			Cr	P	---		
			Br	---	---		
			Cr ⁶⁺	---	---		
			PBBs	---	---		
			PBDEs	---	---		
			DBP	---	---		
			BBP	---	---		
			DEHP	---	---		
		DIBP	---	---			
B-25	Electrolytic Capacitor Green Wire Jacket	Polymer	Pb	P	---	Comply	/
			Cd	P	---		
			Hg	P	---		
			Cr	P	---		
			Br	P	---		
			Cr ⁶⁺	---	---		
			PBBs	---	---		
			PBDEs	---	---		
			DBP	---	N.D.		
			BBP	---	N.D.		
			DEHP	---	N.D.		
		DIBP	---	N.D.			



Part No.	Description	Material	X-ray Screening		Results of Chemical Test	Conclusion on RoHS EU	Sample Resubmitted
			Element	Data			
B-26	Electrolytic Capacitor Silvery Metal Case	Metal	Pb	P	Negative	Comply	/
			Cd	P			
			Hg	P			
			Cr	D			
			Br	---			
			Cr ⁶⁺	---			
			PBBs	---			
			PBDEs	---			
			DBP	---			
			BBP	---			
			DEHP	---			
			DIBP	---			
B-27	Electrolytic Capacitor Black Soft Plastic Pad	Polymer	Pb	P	N.D. N.D. N.D. N.D.	Comply	/
			Cd	P			
			Hg	P			
			Cr	P			
			Br	P			
			Cr ⁶⁺	---			
			PBBs	---			
			PBDEs	---			
			DBP	---			
			BBP	---			
			DEHP	---			
			DIBP	---			
B-28	Electrolytic Capacitor Brown Electrolyte	Composite	Pb	P	N.D. N.D. N.D. N.D.	Comply	/
			Cd	P			
			Hg	P			
			Cr	P			
			Br	P			
			Cr ⁶⁺	---			
			PBBs	---			
			PBDEs	---			
			DBP	---			
			BBP	---			
			DEHP	---			
			DIBP	---			
B-29	Electrolytic Capacitor Silvery Metal Electrode	Metal	Pb	P	Negative	Comply	/
			Cd	P			
			Hg	P			
			Cr	D			
			Br	---			
			Cr ⁶⁺	---			
			PBBs	---			
			PBDEs	---			
			DBP	---			
			BBP	---			
			DEHP	---			
			DIBP	---			



Part No.	Description	Material	X-ray Screening		Results of Chemical Test	Conclusion on RoHS EU	Sample Resubmitted
			Element	Data			
B-30	Electrolytic Capacitor Silvery Metal Case	Metal	Pb	P	---	Comply	/
			Cd	P			
			Hg	P			
			Cr	P			
			Br	---			
			Cr ⁶⁺	---			
			PBBs	---			
			PBDEs	---			
			DBP	---			
			BBP	---			
			DEHP	---			
DIBP	---						
B-31	Electrolytic Capacitor Black Soft Plastic Pad	Polymer	Pb	P	---	Comply	/
			Cd	P			
			Hg	P			
			Cr	P			
			Br	P			
			Cr ⁶⁺	---			
			PBBs	---			
			PBDEs	---			
			DBP	N.D.			
			BBP	N.D.			
			DEHP	N.D.			
DIBP	N.D.						
B-32	Electrolytic Capacitor Black Electrolyte	Composite	Pb	P	---	Comply	/
			Cd	P			
			Hg	P			
			Cr	P			
			Br	P			
			Cr ⁶⁺	---			
			PBBs	---			
			PBDEs	---			
			DBP	N.D.			
			BBP	N.D.			
			DEHP	N.D.			
DIBP	N.D.						
B-33	Electrolytic Capacitor Silvery Metal Electrode	Metal	Pb	P	Negative	Comply	/
			Cd	P			
			Hg	P			
			Cr	D			
			Br	---			
			Cr ⁶⁺	---			
			PBBs	---			
			PBDEs	---			
			DBP	---			
			BBP	---			
			DEHP	---			
DIBP	---						



Part No.	Description	Material	X-ray Screening		Results of Chemical Test	Conclusion on RoHS EU	Sample Resubmitted
			Element	Data			
B-34	White Hot Melt Adhesive	Polymer	Pb	P	---	Comply	/
			Cd	P	---		
			Hg	P	---		
			Cr	D	---		
			Br	P	---		
			Cr ⁶⁺	---	N.D.		
			PBBs	---	---		
			PBDEs	---	---		
			DBP	---	N.D.		
			BBP	---	N.D.		
			DEHP	---	N.D.		
			DIBP	---	N.D.		
B-35	Blue Ceramic Capacitor	Composite	Pb	P	---	Comply	/
			Cd	P	---		
			Hg	P	---		
			Cr	P	---		
			Br	P	---		
			Cr ⁶⁺	---	---		
			PBBs	---	---		
			PBDEs	---	---		
			DBP	---	N.D.		
			BBP	---	N.D.		
			DEHP	---	N.D.		
			DIBP	---	N.D.		
B-36	Coil Inductance Red Metal Wire	Composite	Pb	P	---	Comply	/
			Cd	P	---		
			Hg	P	---		
			Cr	D	---		
			Br	P	---		
			Cr ⁶⁺	---	N.D.		
			PBBs	---	---		
			PBDEs	---	---		
			DBP	---	N.D.		
			BBP	---	N.D.		
			DEHP	---	N.D.		
			DIBP	---	N.D.		
B-37	Coil Inductance Red Metal Wire	Metal	Pb	P	---	Comply	/
			Cd	P	---		
			Hg	P	---		
			Cr	P	---		
			Br	---	---		
			Cr ⁶⁺	---	---		
			PBBs	---	---		
			PBDEs	---	---		
			DBP	---	---		
			BBP	---	---		
			DEHP	---	---		
			DIBP	---	---		



Part No.	Description	Material	X-ray Screening		Results of Chemical Test	Conclusion on RoHS EU	Sample Resubmitted
			Element	Data			
B-38	Coil Inductance Copper Metal Wire	Metal	Pb	P	---	Comply	/
			Cd	P	---		
			Hg	P	---		
			Cr	P	---		
			Br	---	---		
			Cr ⁶⁺	---	---		
			PBBs	---	---		
			PBDEs	---	---		
			DBP	---	---		
			BBP	---	---		
			DEHP	---	---		
			DIBP	---	---		
B-39	Black Ceramic Resistor	Composite	Pb	P	---	Comply	/
			Cd	P	---		
			Hg	P	---		
			Cr	P	---		
			Br	P	---		
			Cr ⁶⁺	---	---		
			PBBs	---	---		
			PBDEs	---	---		
			DBP	---	N.D.		
			BBP	---	N.D.		
			DEHP	---	N.D.		
			DIBP	---	N.D.		
B-40	Yellow Safety Capacitor	Composite	Pb	P	---	Comply	/
			Cd	P	---		
			Hg	P	---		
			Cr	P	---		
			Br	P	---		
			Cr ⁶⁺	---	---		
			PBBs	---	---		
			PBDEs	---	---		
			DBP	---	N.D.		
			BBP	---	N.D.		
			DEHP	---	N.D.		
			DIBP	---	N.D.		
B-41	Fuse Black Heat Shrinkable Casing	Polymer	Pb	P	---	Comply	/
			Cd	P	---		
			Hg	P	---		
			Cr	P	---		
			Br	P	---		
			Cr ⁶⁺	---	---		
			PBBs	---	---		
			PBDEs	---	---		
			DBP	---	N.D.		
			BBP	---	N.D.		
			DEHP	---	N.D.		
			DIBP	---	N.D.		



Part No.	Description	Material	X-ray Screening		Results of Chemical Test	Conclusion on RoHS EU	Sample Resubmitted
			Element	Data			
B-42	Fuse Silvery Metal With Both Ends	Metal	Pb	P	---	Comply	/
			Cd	P			
			Hg	P			
			Cr	P			
			Br	---			
			Cr ⁶⁺	---			
			PBBs	---			
			PBDEs	---			
			DBP	---			
			BBP	---			
			DEHP	---			
			DIBP	---			
B-43	Fuse Glass Tube	Composite	Pb	P	---	Comply	/
			Cd	P			
			Hg	P			
			Cr	P			
			Br	P			
			Cr ⁶⁺	---			
			PBBs	---			
			PBDEs	---			
			DBP	N.D.			
			BBP	N.D.			
			DEHP	N.D.			
			DIBP	N.D.			
B-44	Fuse Silvery Metal Pin	Metal	Pb	P	---	Comply	/
			Cd	P			
			Hg	P			
			Cr	P			
			Br	---			
			Cr ⁶⁺	---			
			PBBs	---			
			PBDEs	---			
			DBP	---			
			BBP	---			
			DEHP	---			
			DIBP	---			
B-45	Coil Inductance Silvery Metal	Metal	Pb	P	Negative	Comply	/
			Cd	P			
			Hg	P			
			Cr	D			
			Br	---			
			Cr ⁶⁺	---			
			PBBs	---			
			PBDEs	---			
			DBP	---			
			BBP	---			
			DEHP	---			
			DIBP	---			



Part No.	Description	Material	X-ray Screening		Results of Chemical Test	Conclusion on RoHS EU	Sample Resubmitted
			Element	Data			
B-46	Coil Inductance Black Ceramic	Composite	Pb	P	---	Comply	/
			Cd	P	---		
			Hg	P	---		
			Cr	P	---		
			Br	P	---		
			Cr ⁶⁺	---	---		
			PBBs	---	---		
			PBDEs	---	---		
			DBP	---	N.D.		
			BBP	---	N.D.		
			DEHP	---	N.D.		
DIBP	---	N.D.					
B-47	Coil Inductance Black Plastic	Polymer	Pb	P	---	Comply	/
			Cd	P	---		
			Hg	P	---		
			Cr	P	---		
			Br	P	---		
			Cr ⁶⁺	---	---		
			PBBs	---	---		
			PBDEs	---	---		
			DBP	---	N.D.		
			BBP	---	N.D.		
			DEHP	---	N.D.		
DIBP	---	N.D.					
B-48	Coil Inductance Copper-Colored Metal Core	Metal	Pb	P	---	Comply	/
			Cd	P	---		
			Hg	P	---		
			Cr	P	---		
			Br	---	---		
			Cr ⁶⁺	---	---		
			PBBs	---	---		
			PBDEs	---	---		
			DBP	---	---		
			BBP	---	---		
			DEHP	---	---		
DIBP	---	---					
B-49	Black Triode	Composite	Pb	P	---	Comply	/
			Cd	P	---		
			Hg	P	---		
			Cr	P	---		
			Br	P	---		
			Cr ⁶⁺	---	---		
			PBBs	---	---		
			PBDEs	---	---		
			DBP	---	N.D.		
			BBP	---	N.D.		
			DEHP	---	N.D.		
DIBP	---	N.D.					



Part No.	Description	Material	X-ray Screening		Results of Chemical Test	Conclusion on RoHS EU	Sample Resubmitted
			Element	Data			
B-50	Transformer Yellow Tape	Polymer	Pb	P	---	Comply	/
			Cd	P	---		
			Hg	P	---		
			Cr	P	---		
			Br	P	---		
			Cr ⁶⁺	---	---		
			PBBs	---	---		
			PBDEs	---	---		
			DBP	---	N.D.		
			BBP	---	N.D.		
			DEHP	---	N.D.		
			DIBP	---	N.D.		
B-51	Transformer Black Ceramic	Composite	Pb	P	---	Comply	/
			Cd	P	---		
			Hg	P	---		
			Cr	P	---		
			Br	P	---		
			Cr ⁶⁺	---	---		
			PBBs	---	---		
			PBDEs	---	---		
			DBP	---	N.D.		
			BBP	---	N.D.		
			DEHP	---	N.D.		
			DIBP	---	N.D.		
B-52	Transformer White Plastic Sleeve	Polymer	Pb	P	---	Comply	/
			Cd	P	---		
			Hg	P	---		
			Cr	P	---		
			Br	P	---		
			Cr ⁶⁺	---	---		
			PBBs	---	---		
			PBDEs	---	---		
			DBP	---	N.D.		
			BBP	---	N.D.		
			DEHP	---	N.D.		
			DIBP	---	N.D.		
B-53	Transformer Yellow Enameled Wire	Composite	Pb	P	---	Comply	/
			Cd	P	---		
			Hg	P	---		
			Cr	P	---		
			Br	P	---		
			Cr ⁶⁺	---	---		
			PBBs	---	---		
			PBDEs	---	---		
			DBP	---	N.D.		
			BBP	---	N.D.		
			DEHP	---	N.D.		
			DIBP	---	N.D.		



Part No.	Description	Material	X-ray Screening		Results of Chemical Test	Conclusion on RoHS EU	Sample Resubmitted
			Element	Data			
B-54	Transformer Black Plastic	Polymer	Pb	P	---	Comply	/
			Cd	P	---		
			Hg	P	---		
			Cr	P	---		
			Br	P	---		
			Cr ⁶⁺	---	---		
			PBBs	---	---		
			PBDEs	---	---		
			DBP	---	N.D.		
			BBP	---	N.D.		
			DEHP	---	N.D.		
			DIBP	---	N.D.		
B-55	Transformer Copper-Colored Wire	Metal	Pb	P	---	Comply	/
			Cd	P	---		
			Hg	P	---		
			Cr	P	---		
			Br	---	---		
			Cr ⁶⁺	---	---		
			PBBs	---	---		
			PBDEs	---	---		
			DBP	---	---		
			BBP	---	---		
			DEHP	---	---		
			DIBP	---	---		
B-56	Transformer Silvery Metal Pin	Metal	Pb	P	---	Comply	/
			Cd	P	---		
			Hg	P	---		
			Cr	P	---		
			Br	---	---		
			Cr ⁶⁺	---	---		
			PBBs	---	---		
			PBDEs	---	---		
			DBP	---	---		
			BBP	---	---		
			DEHP	---	---		
			DIBP	---	---		
B-57	Black IC	Composite	Pb	P	---	Comply	/
			Cd	P	---		
			Hg	P	---		
			Cr	P	---		
			Br	P	---		
			Cr ⁶⁺	---	---		
			PBBs	---	---		
			PBDEs	---	---		
			DBP	---	N.D.		
			BBP	---	N.D.		
			DEHP	---	N.D.		
			DIBP	---	N.D.		



Part No.	Description	Material	X-ray Screening		Results of Chemical Test	Conclusion on RoHS EU	Sample Resubmitted
			Element	Data			
B-58	Black IC	Composite	Pb	P	---	Comply	/
			Cd	P			
			Hg	P			
			Cr	P			
			Br	P			
			Cr ⁶⁺	---			
			PBBs	---			
			PBDEs	---			
			DBP	---			
			BBP	---			
			DEHP	---			
			DIBP	---			
B-59	Black IC	Composite	Pb	P	---	Comply	/
			Cd	P			
			Hg	P			
			Cr	P			
			Br	P			
			Cr ⁶⁺	---			
			PBBs	---			
			PBDEs	---			
			DBP	---			
			BBP	---			
			DEHP	---			
			DIBP	---			
B-60	Black Rectifier Bridge	Composite	Pb	D	*2.82×10 ⁴	Comply	/
			Cd	P			
			Hg	P			
			Cr	P			
			Br	P			
			Cr ⁶⁺	---			
			PBBs	---			
			PBDEs	---			
			DBP	---			
			BBP	---			
			DEHP	---			
			DIBP	---			
B-61	Black Diode	Composite	Pb	P	---	Comply	/
			Cd	P			
			Hg	P			
			Cr	P			
			Br	P			
			Cr ⁶⁺	---			
			PBBs	---			
			PBDEs	---			
			DBP	---			
			BBP	---			
			DEHP	---			
			DIBP	---			



Part No.	Description	Material	X-ray Screening		Results of Chemical Test	Conclusion on RoHS EU	Sample Resubmitted
			Element	Data			
B-62	Black Diode	Composite	Pb	D	*1.52×10 ⁴ --- --- --- --- --- --- N.D. N.D. N.D. N.D.	Comply	/
			Cd	P			
			Hg	P			
			Cr	P			
			Br	P			
			Cr ⁶⁺	---			
			PBBs	---			
			PBDEs	---			
			DBP	---			
			BBP	---			
			DEHP	---			
			DIBP	---			
B-63	Black Diode	Composite	Pb	D	*2.12×10 ⁴ --- --- --- --- --- --- N.D. N.D. N.D. N.D.	Comply	/
			Cd	P			
			Hg	P			
			Cr	P			
			Br	P			
			Cr ⁶⁺	---			
			PBBs	---			
			PBDEs	---			
			DBP	---			
			BBP	---			
			DEHP	---			
			DIBP	---			
B-64	Black Diode	Composite	Pb	P	--- --- --- --- --- --- --- N.D. N.D. N.D. N.D.	Comply	/
			Cd	P			
			Hg	P			
			Cr	P			
			Br	P			
			Cr ⁶⁺	---			
			PBBs	---			
			PBDEs	---			
			DBP	---			
			BBP	---			
			DEHP	---			
			DIBP	---			
B-65	Chip Capacitor	Composite	Pb	P	--- --- --- --- --- --- --- N.D. N.D. N.D. N.D.	Comply	/
			Cd	P			
			Hg	P			
			Cr	P			
			Br	P			
			Cr ⁶⁺	---			
			PBBs	---			
			PBDEs	---			
			DBP	---			
			BBP	---			
			DEHP	---			
			DIBP	---			



Part No.	Description	Material	X-ray Screening		Results of Chemical Test	Conclusion on RoHS EU	Sample Resubmitted
			Element	Data			
B-66	Chip Resistor	Composite	Pb	P	---	Comply	/
			Cd	P	---		
			Hg	P	---		
			Cr	P	---		
			Br	P	---		
			Cr ⁶⁺	---	---		
			PBBs	---	---		
			PBDEs	---	---		
			DBP	---	N.D.		
			BBP	---	N.D.		
			DEHP	---	N.D.		
			DIBP	---	N.D.		
B-67	Tin Solder	Metal	Pb	P	---	Comply	/
			Cd	P	---		
			Hg	P	---		
			Cr	P	---		
			Br	---	---		
			Cr ⁶⁺	---	---		
			PBBs	---	---		
			PBDEs	---	---		
			DBP	---	---		
			BBP	---	---		
			DEHP	---	---		
			DIBP	---	---		
B-68	Green PCB	Composite	Pb	P	---	Comply	/
			Cd	P	---		
			Hg	P	---		
			Cr	P	---		
			Br	D	---		
			Cr ⁶⁺	---	---		
			PBBs	---	N.D.		
			PBDEs	---	N.D.		
			DBP	---	N.D.		
			BBP	---	N.D.		
			DEHP	---	N.D.		
			DIBP	---	N.D.		
C-1	USB Port Silvery Metal Screw	Metal	Pb	P	---	Comply	/
			Cd	P	---		
			Hg	P	---		
			Cr	P	---		
			Br	---	---		
			Cr ⁶⁺	---	---		
			PBBs	---	---		
			PBDEs	---	---		
			DBP	---	---		
			BBP	---	---		
			DEHP	---	---		
			DIBP	---	---		



Part No.	Description	Material	X-ray Screening		Results of Chemical Test	Conclusion on RoHS EU	Sample Resubmitted
			Element	Data			
C-2	USB Port Black Soft Plastic	Polymer	Pb	P	---	Comply	/
			Cd	P	---		
			Hg	P	---		
			Cr	P	---		
			Br	P	---		
			Cr ⁶⁺	---	---		
			PBBs	---	---		
			PBDEs	---	---		
			DBP	---	N.D.		
			BBP	---	N.D.		
			DEHP	---	N.D.		
		DIBP	---	N.D.			
C-3	USB Port Silvery Metal Case	Metal	Pb	P	---	Comply	/
			Cd	P	---		
			Hg	P	---		
			Cr	P	---		
			Br	---	---		
			Cr ⁶⁺	---	---		
			PBBs	---	---		
			PBDEs	---	---		
			DBP	---	---		
			BBP	---	---		
			DEHP	---	---		
		DIBP	---	---			
C-4	USB Port Yellow Tape	Polymer	Pb	P	---	Comply	/
			Cd	P	---		
			Hg	P	---		
			Cr	P	---		
			Br	P	---		
			Cr ⁶⁺	---	---		
			PBBs	---	---		
			PBDEs	---	---		
			DBP	---	N.D.		
			BBP	---	N.D.		
			DEHP	---	N.D.		
		DIBP	---	N.D.			
C-5	USB Port Black Plastic	Polymer	Pb	P	---	Comply	/
			Cd	P	---		
			Hg	P	---		
			Cr	P	---		
			Br	P	---		
			Cr ⁶⁺	---	---		
			PBBs	---	---		
			PBDEs	---	---		
			DBP	---	N.D.		
			BBP	---	N.D.		
			DEHP	---	N.D.		
		DIBP	---	N.D.			



Part No.	Description	Material	X-ray Screening		Results of Chemical Test	Conclusion on RoHS EU	Sample Resubmitted
			Element	Data			
C-6	USB Port Blue Plastic	Polymer	Pb	P	---	Comply	/
			Cd	P	---		
			Hg	P	---		
			Cr	P	---		
			Br	D	---		
			Cr ⁶⁺	---	---		
			PBBs	---	N.D.		
			PBDEs	---	N.D.		
			DBP	---	N.D.		
			BBP	---	N.D.		
			DEHP	---	N.D.		
DIBP	---	N.D.					
C-7	USB Port Silvery Metal Pin	Metal	Pb	P	---	Comply	/
			Cd	P	---		
			Hg	P	---		
			Cr	P	---		
			Br	---	---		
			Cr ⁶⁺	---	---		
			PBBs	---	---		
			PBDEs	---	---		
			DBP	---	---		
			BBP	---	---		
			DEHP	---	---		
DIBP	---	---					
C-8	Type-C Port Black Soft Plastic	Polymer	Pb	P	---	Comply	/
			Cd	P	---		
			Hg	P	---		
			Cr	P	---		
			Br	P	---		
			Cr ⁶⁺	---	---		
			PBBs	---	---		
			PBDEs	---	---		
			DBP	---	N.D.		
			BBP	---	N.D.		
			DEHP	---	N.D.		
DIBP	---	N.D.					
C-9	Type-C Port Silvery Metal Case	Metal	Pb	P	---	Negative	Comply
			Cd	P	---		
			Hg	P	---		
			Cr	D	---		
			Br	---	---		
			Cr ⁶⁺	---	---		
			PBBs	---	---		
			PBDEs	---	---		
			DBP	---	---		
			BBP	---	---		
			DEHP	---	---		
DIBP	---	---					



Part No.	Description	Material	X-ray Screening		Results of Chemical Test	Conclusion on RoHS EU	Sample Resubmitted
			Element	Data			
C-10	Type-C Port Yellow Tape	Polymer	Pb	P	---	Comply	/
			Cd	P	---		
			Hg	P	---		
			Cr	D	---		
			Br	P	---		
			Cr ⁶⁺	---	N.D.		
			PBBs	---	---		
			PBDEs	---	---		
			DBP	---	N.D.		
			BBP	---	N.D.		
			DEHP	---	N.D.		
		DIBP	---	N.D.			
C-11	Type-C Port Black Plastic	Polymer	Pb	P	---	Comply	/
			Cd	P	---		
			Hg	P	---		
			Cr	P	---		
			Br	P	---		
			Cr ⁶⁺	---	---		
			PBBs	---	---		
			PBDEs	---	---		
			DBP	---	N.D.		
			BBP	---	N.D.		
			DEHP	---	N.D.		
		DIBP	---	N.D.			
C-12	Type-C Port Tin Solder	Metal	Pb	P	---	Comply	/
			Cd	P	---		
			Hg	P	---		
			Cr	P	---		
			Br	---	---		
			Cr ⁶⁺	---	---		
			PBBs	---	---		
			PBDEs	---	---		
			DBP	---	---		
			BBP	---	---		
			DEHP	---	---		
		DIBP	---	---			
C-13	Type-C Port Green PCB	Composite	Pb	P	---	Comply	/
			Cd	P	---		
			Hg	P	---		
			Cr	P	---		
			Br	D	---		
			Cr ⁶⁺	---	---		
			PBBs	---	N.D.		
			PBDEs	---	N.D.		
			DBP	---	N.D.		
			BBP	---	N.D.		
			DEHP	---	N.D.		
		DIBP	---	N.D.			



Part No.	Description	Material	X-ray Screening		Results of Chemical Test	Conclusion on RoHS EU	Sample Resubmitted	
			Element	Data				
C-14	Type-C Port Black Plastic	Polymer	Pb	P	---	Comply	/	
			Cd	P	---			
			Hg	P	---			
			Cr	D	---			
			Br	D	---			
			Cr ⁶⁺	---	N.D.			
			PBBs	---	N.D.			
			PBDEs	---	N.D.			
			DBP	---	N.D.			
			BBP	---	N.D.			
			DEHP	---	N.D.			
DIBP	---	N.D.						
C-15	Type-C Port Silvery Metal Insert	Metal	Pb	P	---	Negative	Comply	/
			Cd	P	---			
			Hg	P	---			
			Cr	D	---			
			Br	---	---			
			Cr ⁶⁺	---	---			
			PBBs	---	---			
			PBDEs	---	---			
			DBP	---	---			
			BBP	---	---			
			DEHP	---	---			
DIBP	---	---						
C-16	Type-C Port Silvery Metal Pin	Metal	Pb	P	---	Comply	/	
			Cd	P	---			
			Hg	P	---			
			Cr	P	---			
			Br	---	---			
			Cr ⁶⁺	---	---			
			PBBs	---	---			
			PBDEs	---	---			
			DBP	---	---			
			BBP	---	---			
			DEHP	---	---			
DIBP	---	---						
C-17	Black Plastic Wire Jacket	Polymer	Pb	P	---	Comply	/	
			Cd	P	---			
			Hg	P	---			
			Cr	P	---			
			Br	P	---			
			Cr ⁶⁺	---	---			
			PBBs	---	---			
			PBDEs	---	---			
			DBP	---	N.D.			
			BBP	---	N.D.			
			DEHP	---	N.D.			
DIBP	---	N.D.						



Part No.	Description	Material	X-ray Screening		Results of Chemical Test	Conclusion on RoHS EU	Sample Resubmitted
			Element	Data			
C-18	Silver Blue Foil	Composite	Pb	P	---	Comply	/
			Cd	P	---		
			Hg	P	---		
			Cr	P	---		
			Br	P	---		
			Cr ⁶⁺	---	---		
			PBBs	---	---		
			PBDEs	---	---		
			DBP	---	N.D.		
			BBP	---	N.D.		
			DEHP	---	N.D.		
			DIBP	---	N.D.		
C-19	Copper-Colored Wire	Metal	Pb	P	---	Comply	/
			Cd	P	---		
			Hg	P	---		
			Cr	P	---		
			Br	---	---		
			Cr ⁶⁺	---	---		
			PBBs	---	---		
			PBDEs	---	---		
			DBP	---	---		
			BBP	---	---		
			DEHP	---	---		
			DIBP	---	---		
C-20	Red Inner Wire Jacket	Polymer	Pb	P	---	Comply	/
			Cd	P	---		
			Hg	P	---		
			Cr	P	---		
			Br	P	---		
			Cr ⁶⁺	---	---		
			PBBs	---	---		
			PBDEs	---	---		
			DBP	---	N.D.		
			BBP	---	N.D.		
			DEHP	---	N.D.		
			DIBP	---	N.D.		
C-21	Orange Inner Wire Jacket	Polymer	Pb	P	---	Comply	/
			Cd	P	---		
			Hg	P	---		
			Cr	P	---		
			Br	P	---		
			Cr ⁶⁺	---	---		
			PBBs	---	---		
			PBDEs	---	---		
			DBP	---	N.D.		
			BBP	---	N.D.		
			DEHP	---	N.D.		
			DIBP	---	N.D.		



Part No.	Description	Material	X-ray Screening		Results of Chemical Test	Conclusion on RoHS EU	Sample Resubmitted
			Element	Data			
C-22	Yellow Inner Wire Jacket	Polymer	Pb	P	---	Comply	/
			Cd	P	---		
			Hg	P	---		
			Cr	P	---		
			Br	P	---		
			Cr ⁶⁺	---	---		
			PBBs	---	---		
			PBDEs	---	---		
			DBP	---	N.D.		
			BBP	---	N.D.		
			DEHP	---	N.D.		
			DIBP	---	N.D.		
C-23	Green Inner Wire Jacket	Polymer	Pb	P	---	Comply	/
			Cd	P	---		
			Hg	P	---		
			Cr	P	---		
			Br	P	---		
			Cr ⁶⁺	---	---		
			PBBs	---	---		
			PBDEs	---	---		
			DBP	---	N.D.		
			BBP	---	N.D.		
			DEHP	---	N.D.		
			DIBP	---	N.D.		
C-24	Blue Inner Wire Jacket	Polymer	Pb	P	---	Comply	/
			Cd	P	---		
			Hg	P	---		
			Cr	P	---		
			Br	P	---		
			Cr ⁶⁺	---	---		
			PBBs	---	---		
			PBDEs	---	---		
			DBP	---	N.D.		
			BBP	---	N.D.		
			DEHP	---	N.D.		
			DIBP	---	N.D.		
C-25	Purple Inner Wire Jacket	Polymer	Pb	P	---	Comply	/
			Cd	P	---		
			Hg	P	---		
			Cr	P	---		
			Br	P	---		
			Cr ⁶⁺	---	---		
			PBBs	---	---		
			PBDEs	---	---		
			DBP	---	N.D.		
			BBP	---	N.D.		
			DEHP	---	N.D.		
			DIBP	---	N.D.		



Part No.	Description	Material	X-ray Screening		Results of Chemical Test	Conclusion on RoHS EU	Sample Resubmitted
			Element	Data			
C-26	Black Inner Wire Jacket	Polymer	Pb	P	---	Comply	/
			Cd	P	---		
			Hg	P	---		
			Cr	P	---		
			Br	P	---		
			Cr ⁶⁺	---	---		
			PBBs	---	---		
			PBDEs	---	---		
			DBP	---	N.D.		
			BBP	---	N.D.		
			DEHP	---	N.D.		
			DIBP	---	N.D.		
C-27	White Inner Wire Jacket	Polymer	Pb	P	---	Comply	/
			Cd	P	---		
			Hg	P	---		
			Cr	P	---		
			Br	P	---		
			Cr ⁶⁺	---	---		
			PBBs	---	---		
			PBDEs	---	---		
			DBP	---	N.D.		
			BBP	---	N.D.		
			DEHP	---	N.D.		
			DIBP	---	N.D.		
C-28	Silvery Metal Wire Core	Metal	Pb	P	---	Comply	/
			Cd	P	---		
			Hg	P	---		
			Cr	P	---		
			Br	---	---		
			Cr ⁶⁺	---	---		
			PBBs	---	---		
			PBDEs	---	---		
			DBP	---	---		
			BBP	---	---		
			DEHP	---	---		
			DIBP	---	---		

Remark:

- (1) # = Lead in copper alloy containing up to 4% lead by weight. The item is exempted from the requirements of the item 6(c) in ANNEX III, (Directive 2011/65/EU).
- (2) *=Lead in high melting temperature type solders (i.e. lead-based alloys containing 85 % by weight or more lead, The item is exempted from the requirements of the item 7(a) in ANNEX III, (Directive 2011/65/EU).

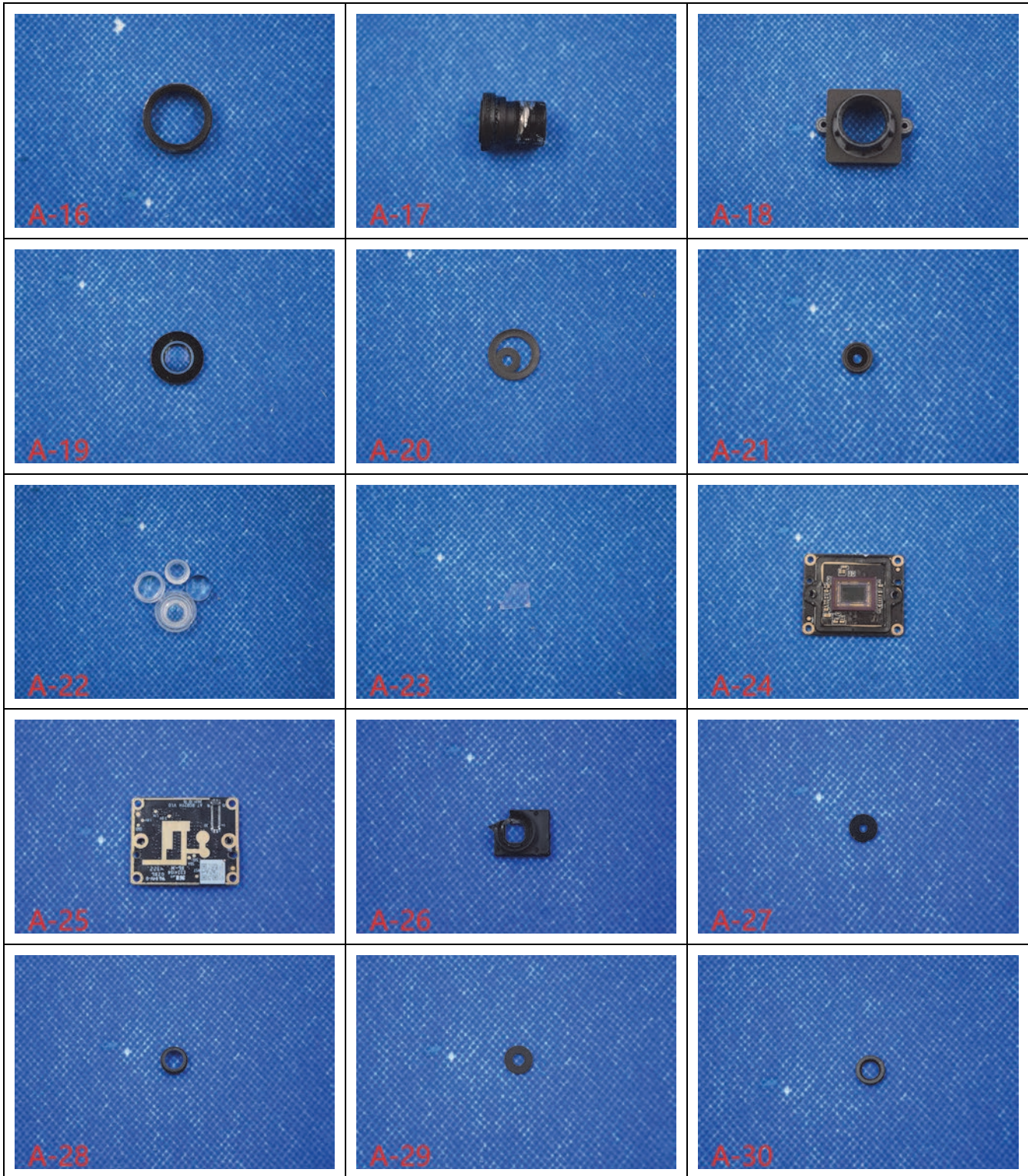
Annex A Photo of Sample

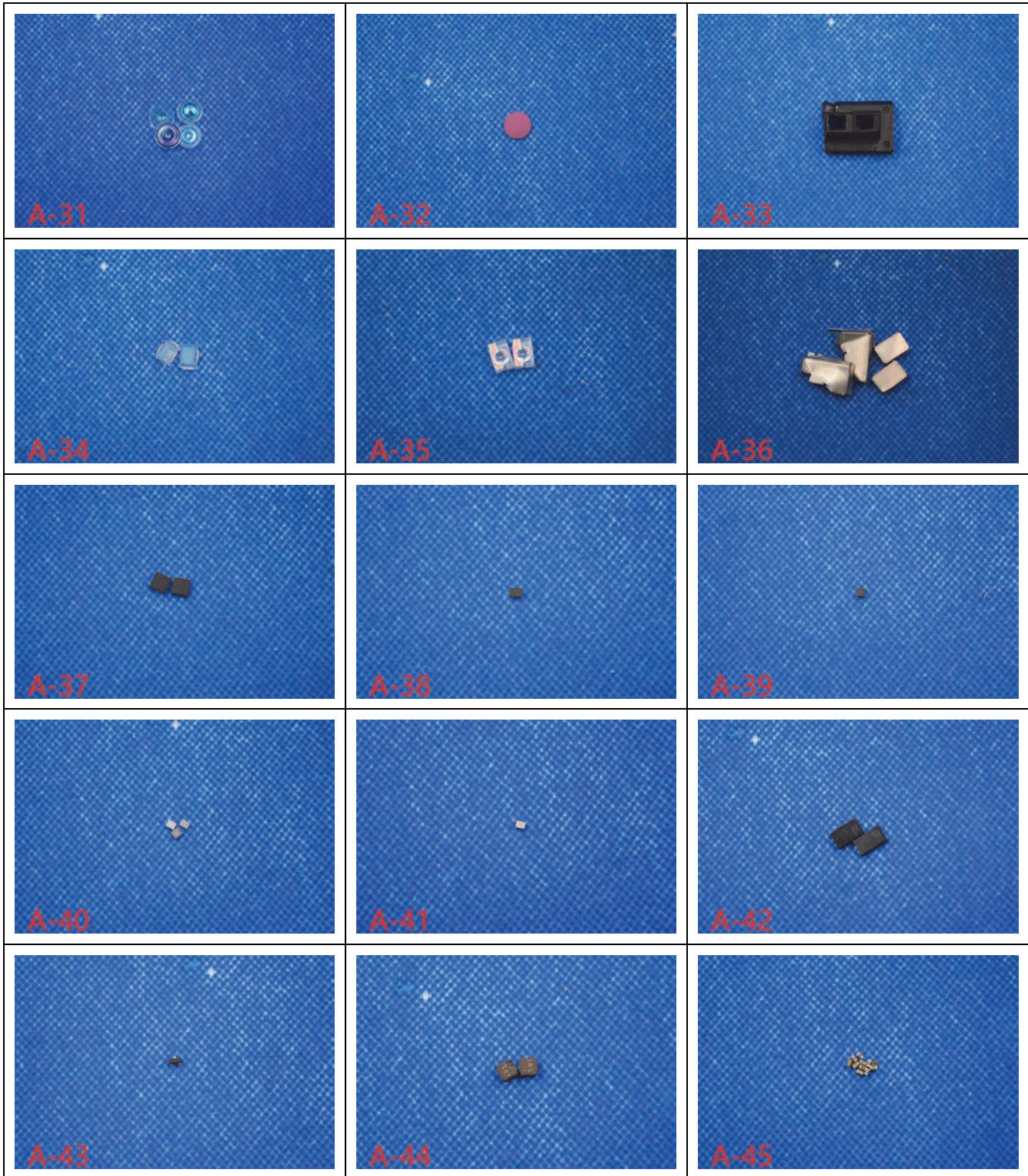


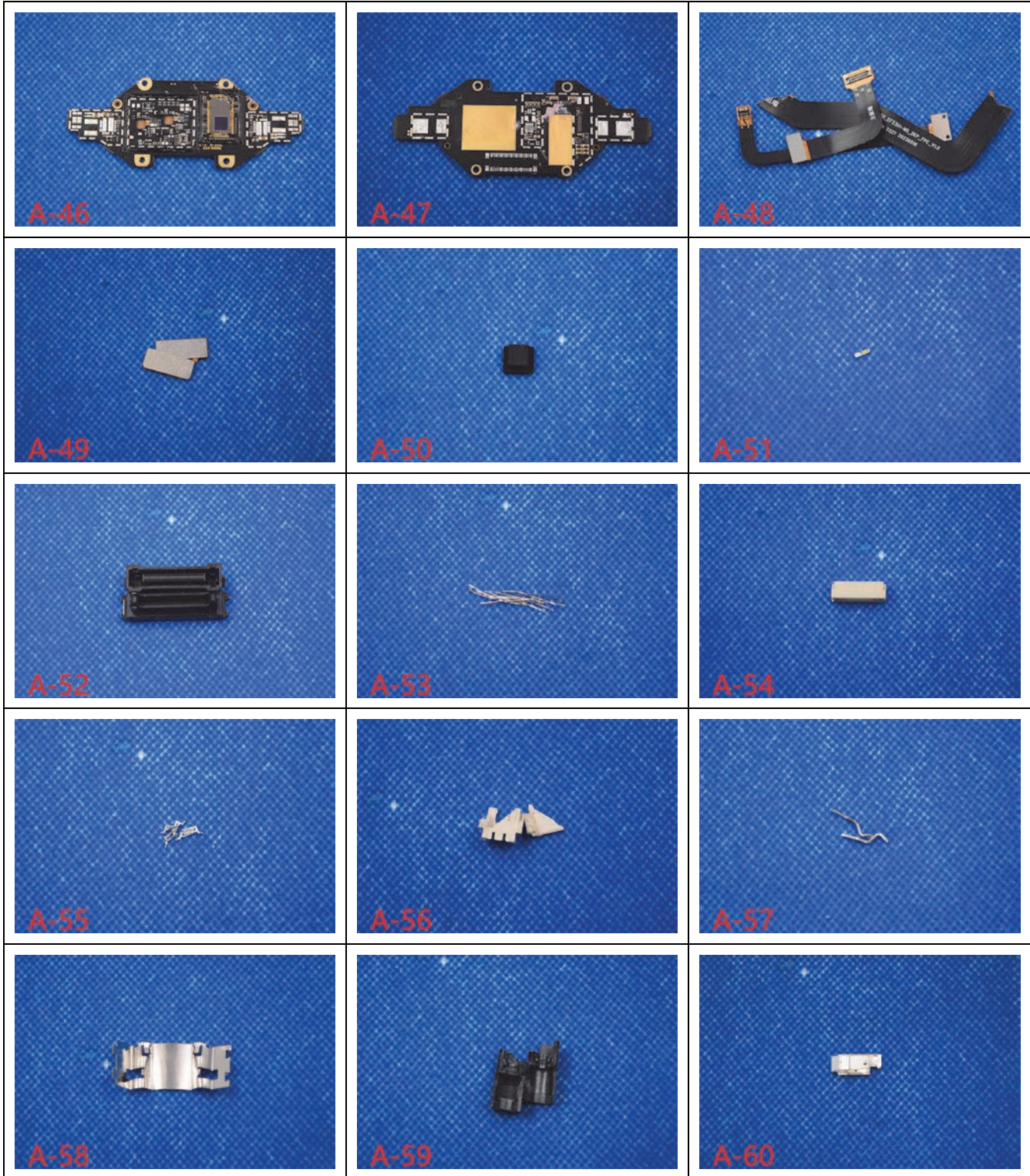


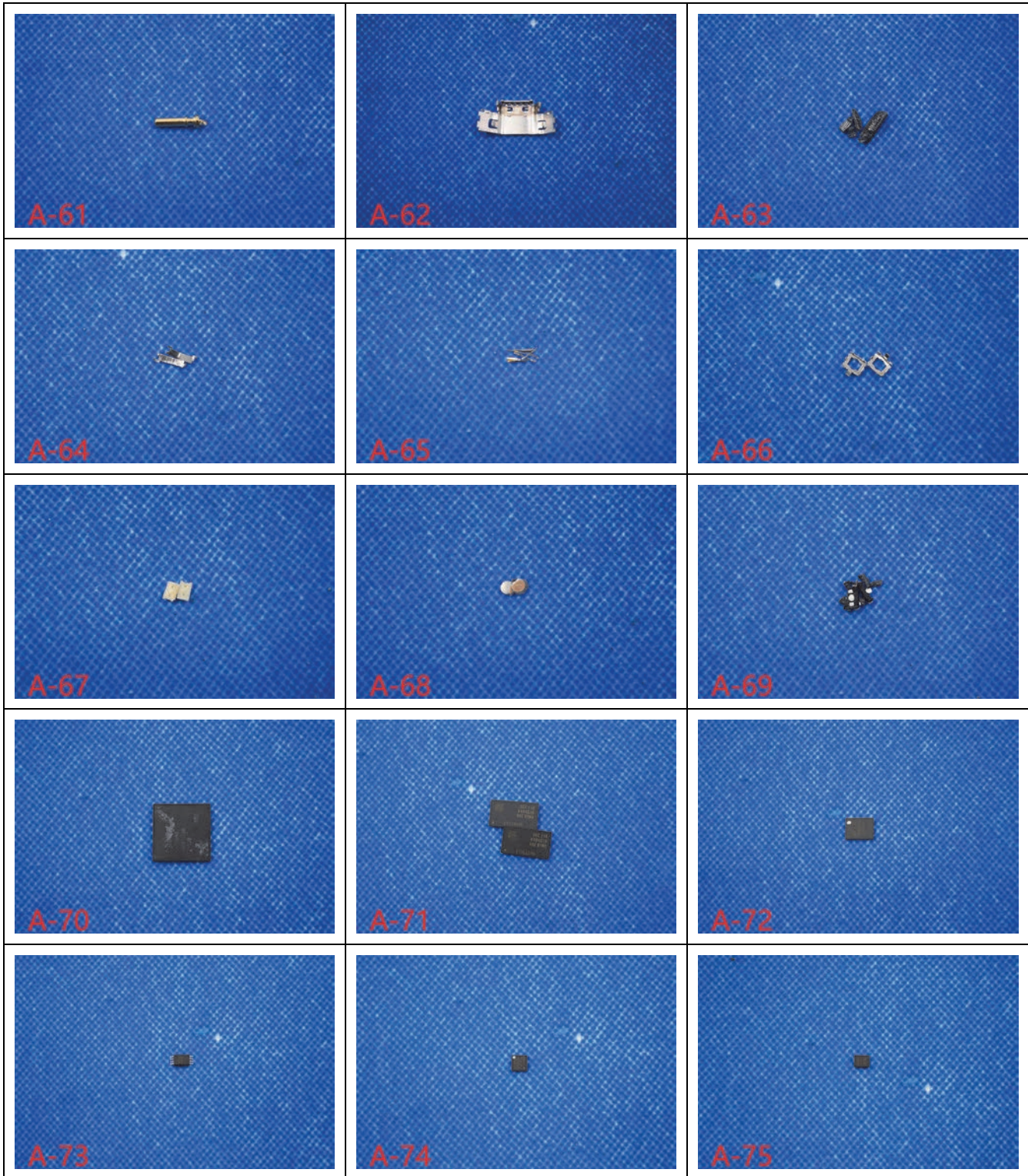
Annex B Photo of Test Part

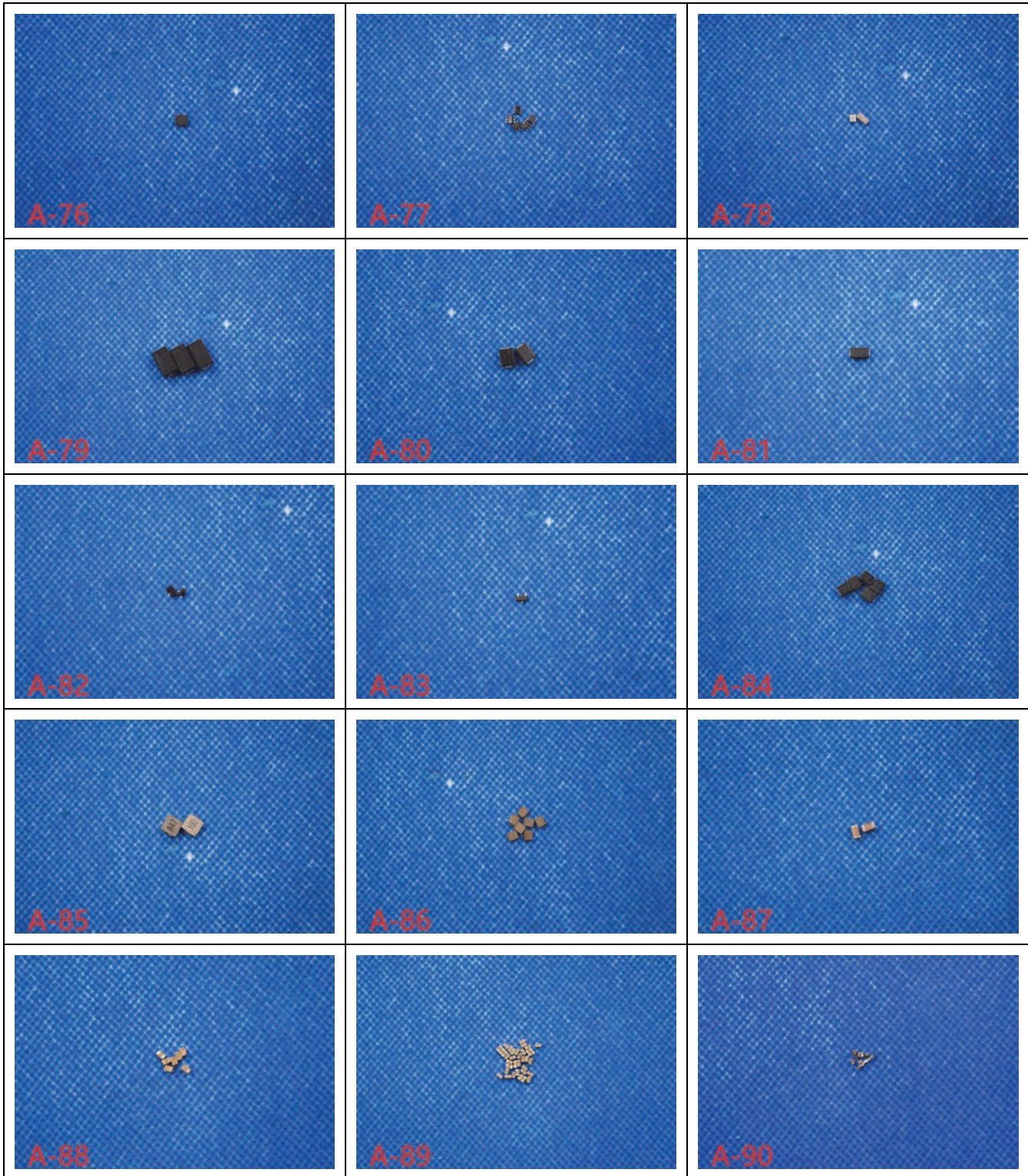


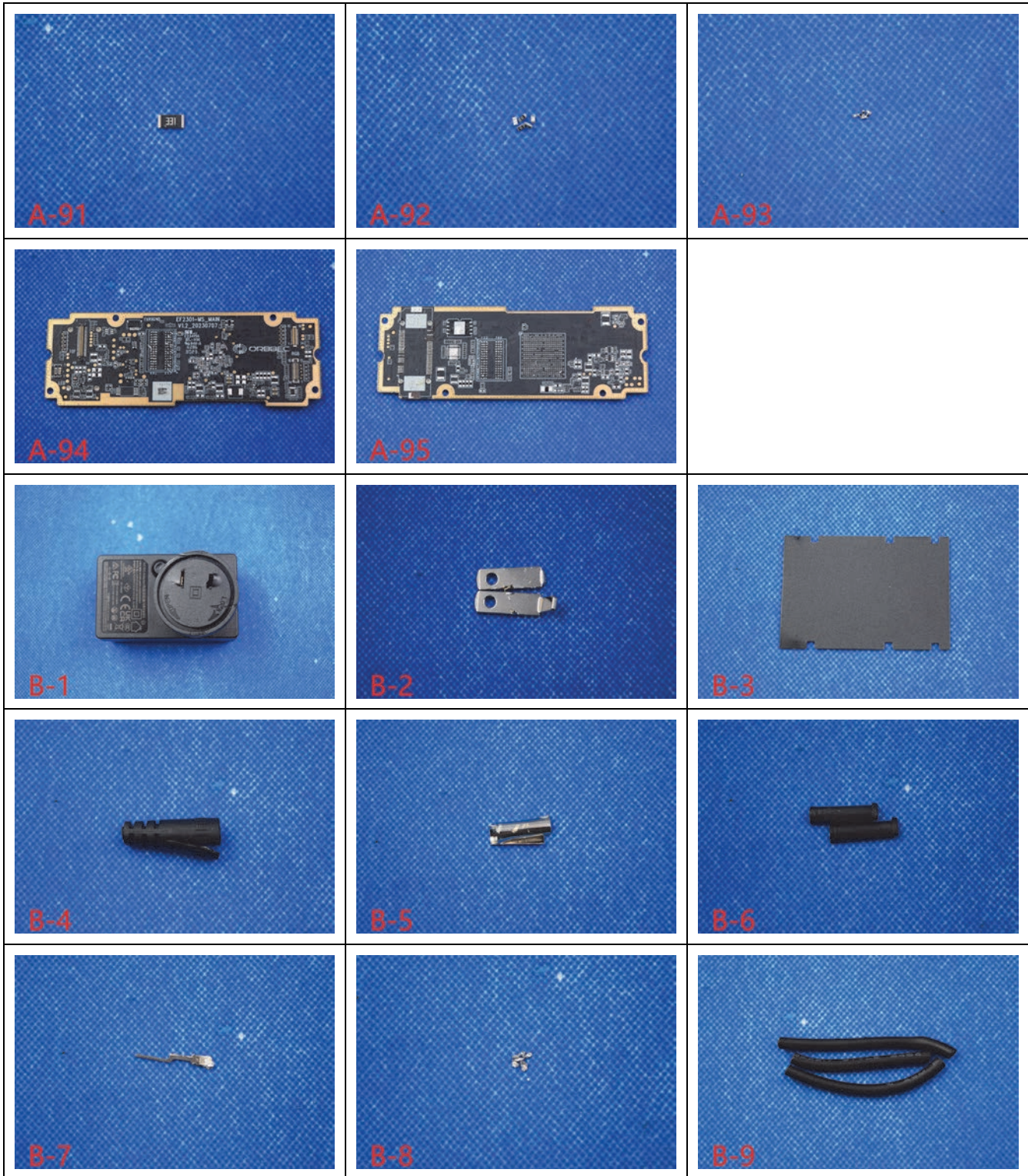




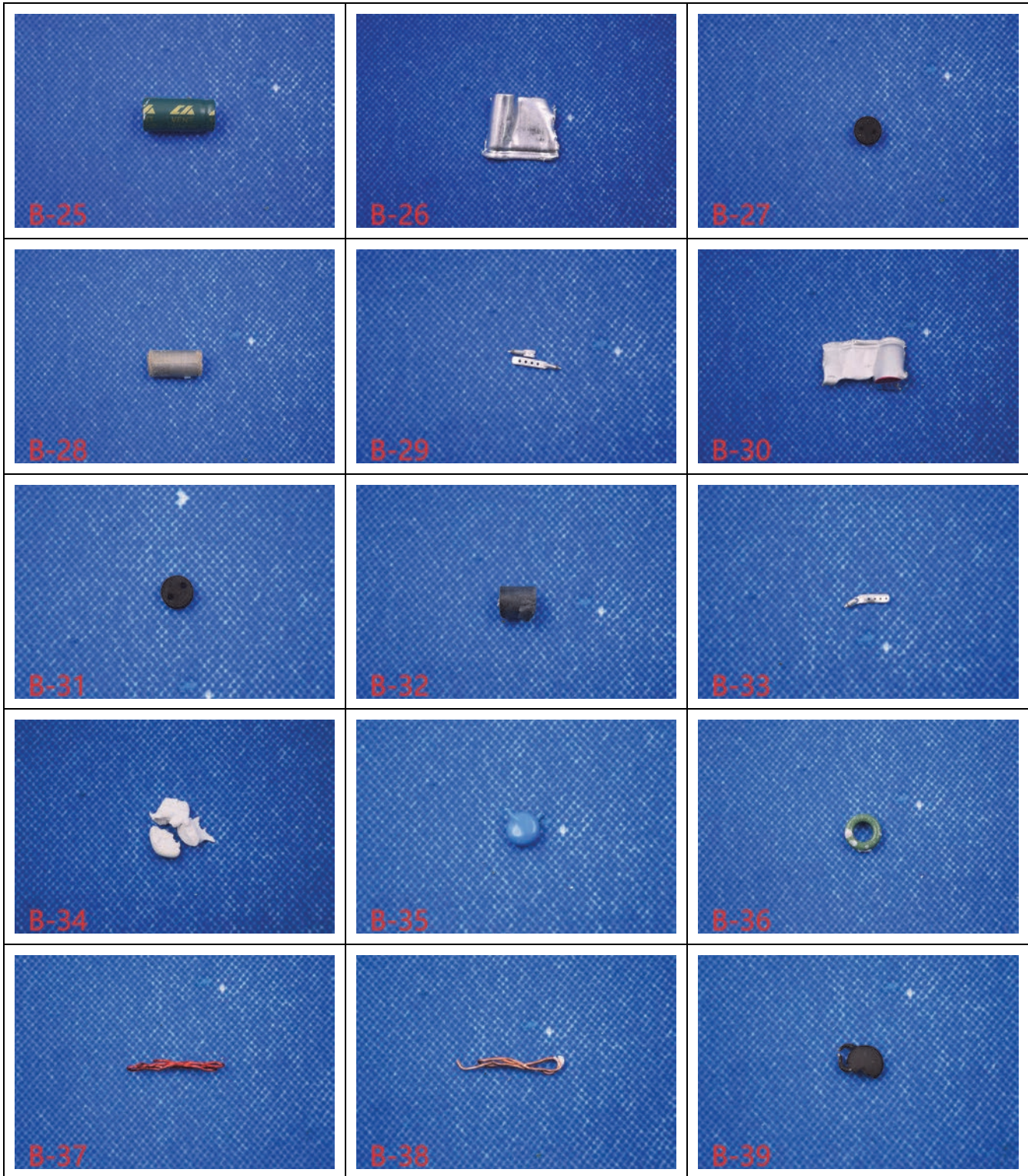




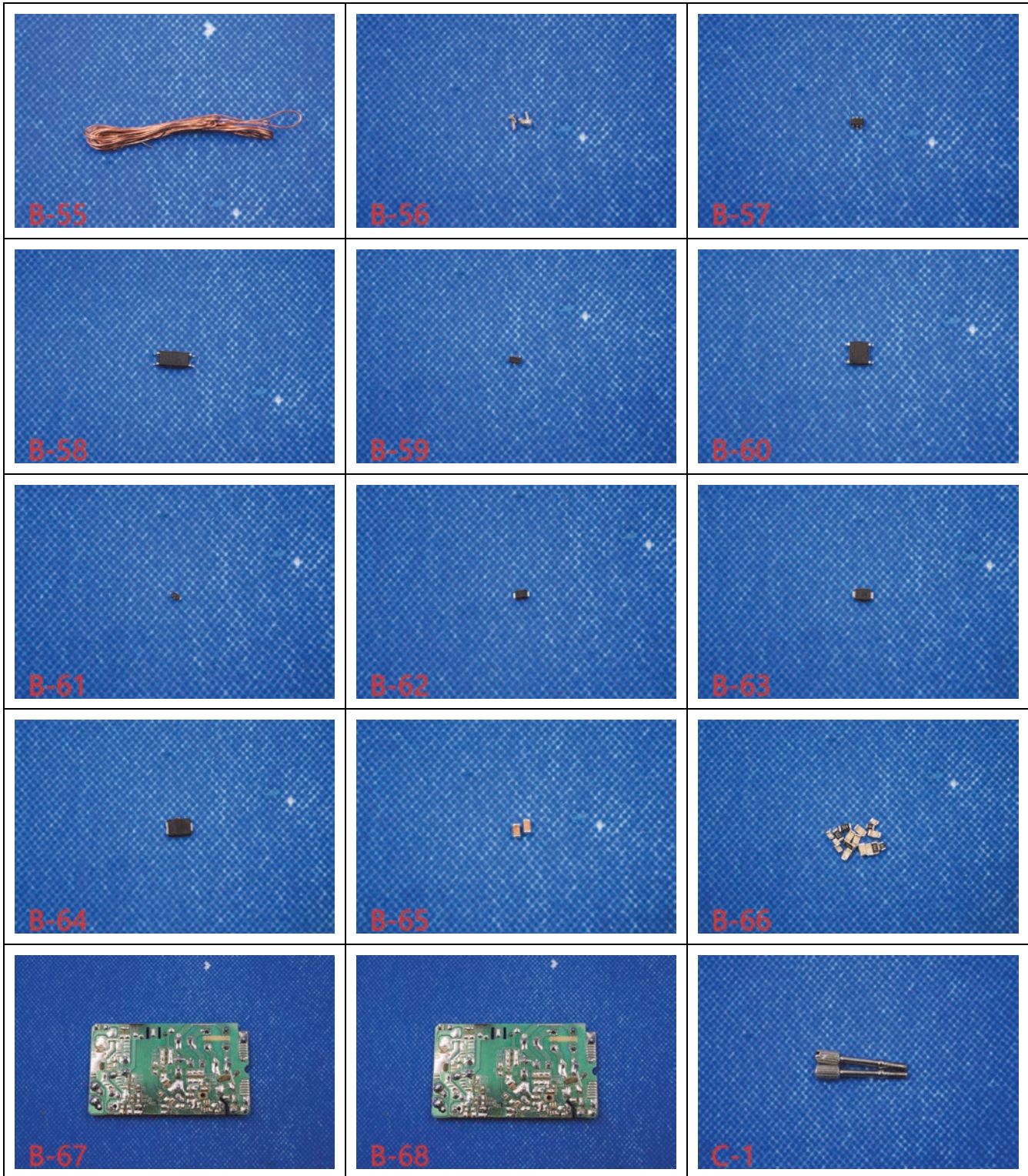


















Annex C General Information

1.1 Identification of the Responsible Testing Laboratory

Laboratory Name:	Shenzhen Morlab Communications Technology Co., Ltd.
Laboratory Address:	FL.1-3, Building A, FeiYang Science Park, No.8 LongChang Road, Block67, BaoAn District, ShenZhen , GuangDong Province, P. R. China
Accredited Testing Laboratory:	CNAS No. L3572 (Shenzhen Morlab Communications Technology Co., Ltd.)
Telephone:	+86 755 36698555
Facsimile:	+86 755 36698525

1.2 Identification of the Responsible Testing Location

Name:	Shenzhen Morlab Communications Technology Co., Ltd.
Address:	FL.1-3, Building A, FeiYang Science Park, No.8 LongChang Road, Block67, BaoAn District, ShenZhen , GuangDong Province, P. R. China

1.3 Test Equipment Utilized

No.	Equipment Name	Serial No.	Type	Manufacturer	Cal.Date	Cal.Due Date
1	X-Ray Fluorescence Spectroscopy(XRF)	100180017-00 406A	EDX-1800B	Skyray	2023.03.30	2024.03.29
2	X-Ray Fluorescence Spectroscopy(XRF)	100180017-01 151A	EDX-1800B	Skyray	2023.07.04	2024.07.03
3	Gas Chromatography-Mass Spectrometer (GC-MS)	CN10617090	6890-5975I	Agilent	2023.02.09	2025.02.08
4	Ultraviolet and visible spectrophotometry (UV-Vis)	723S18011	DP-733S	Delp	2023.06.27	2024.06.26
5	Inductive Coupled Plasma Emission Spectrometer (ICP-OES)	IC72DC160825	ICAP7200	Thermo	2023.02.09	2025.02.08
6	Gas Chromatography-Mass Spectrometer (GC-MS)	C70504400059 SA	QP2010 PLus	SHIMADZU	2023.02.09	2025.02.08
7	Gas Chromatography-Mass Spectrometer (GC-MS)	021745700818 SA	QP2020 NX	SHIMADZU	2021.10.20	2023.10.19

***** END OF REPORT *****